

THU-AM-085

# All-in-focus Imaging from Event Focal Stack

Hanyue Lou<sup>1,2</sup> # Mingguo Teng<sup>1,2</sup> # Yixin Yang<sup>1,2</sup> Boxin Shi<sup>1,2</sup>

<sup>1</sup> National Key Laboratory for Multimedia Information Processing, School of Computer Science, Peking University

<sup>2</sup> National Engineering Research Center of Visual Technology, School of Computer Science, Peking University

# Contributed equally to this work as first authors



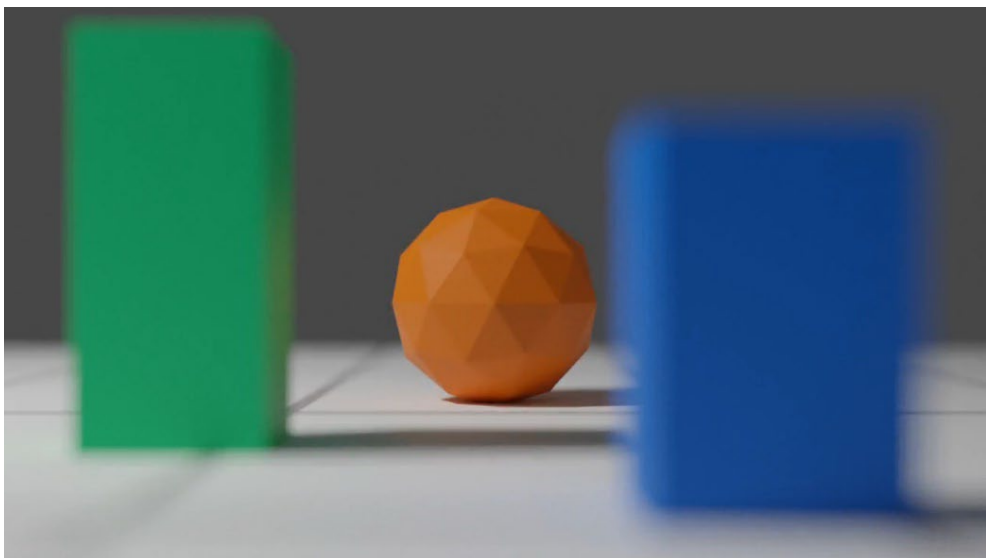
北京大學  
PEKING UNIVERSITY



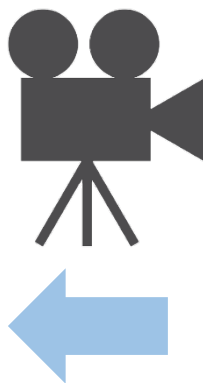
# Abstract



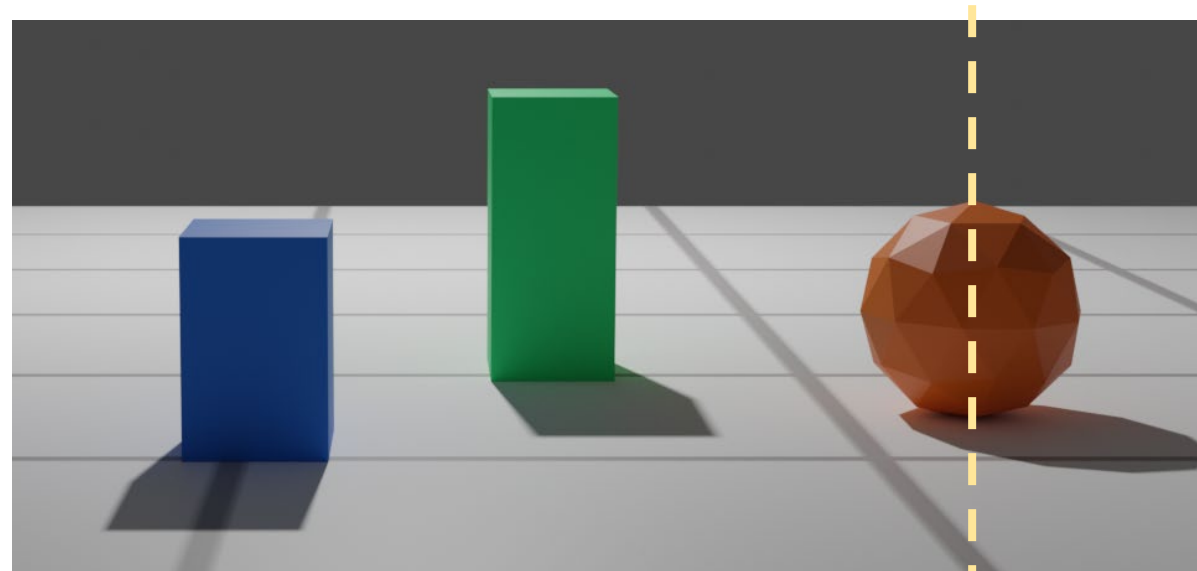
Traditional Camera



One depth in focus



Scene



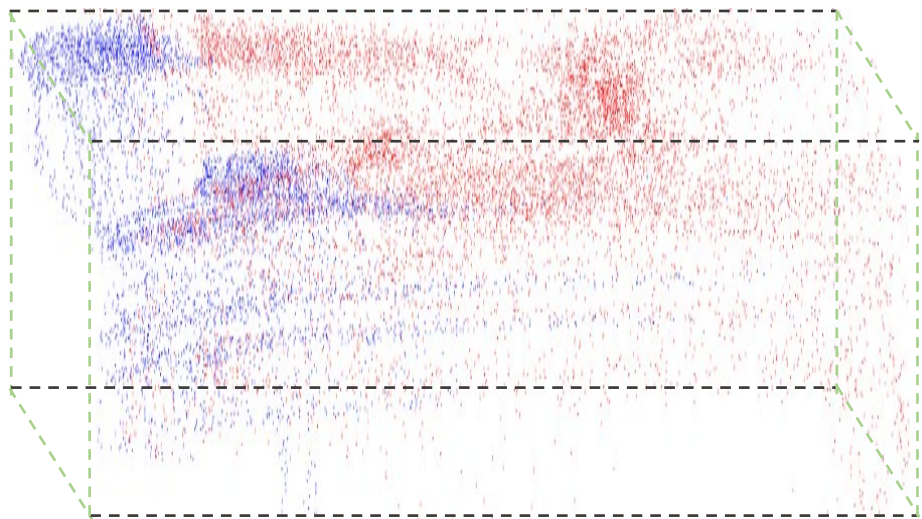
Focal Depth



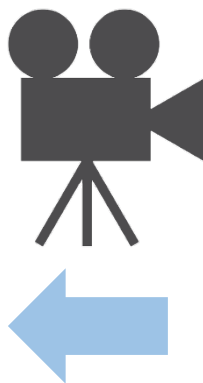
# Abstract



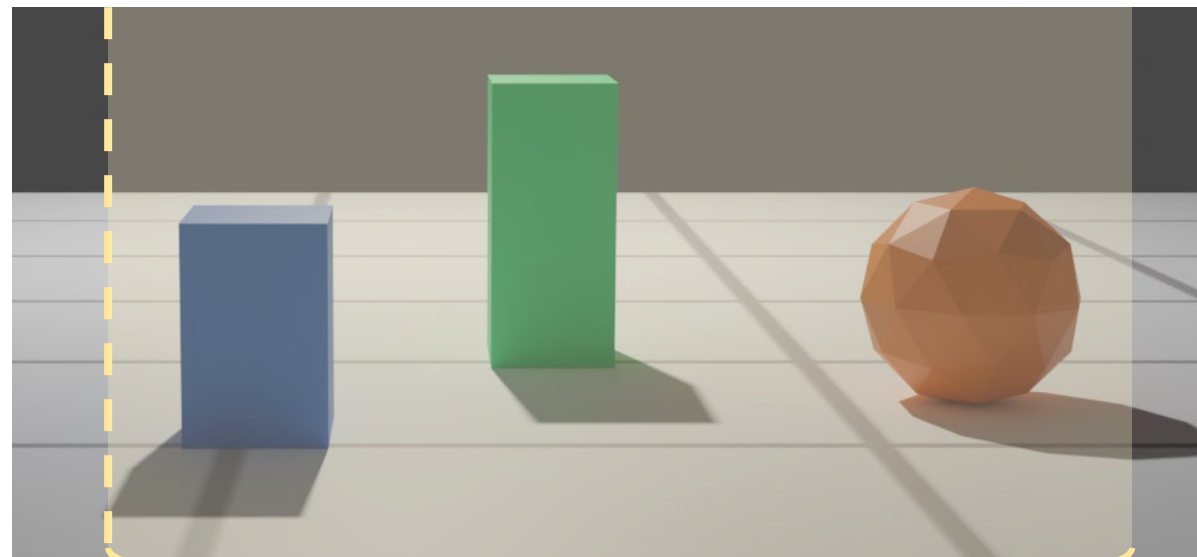
Event Focal Stack



All depths in focus

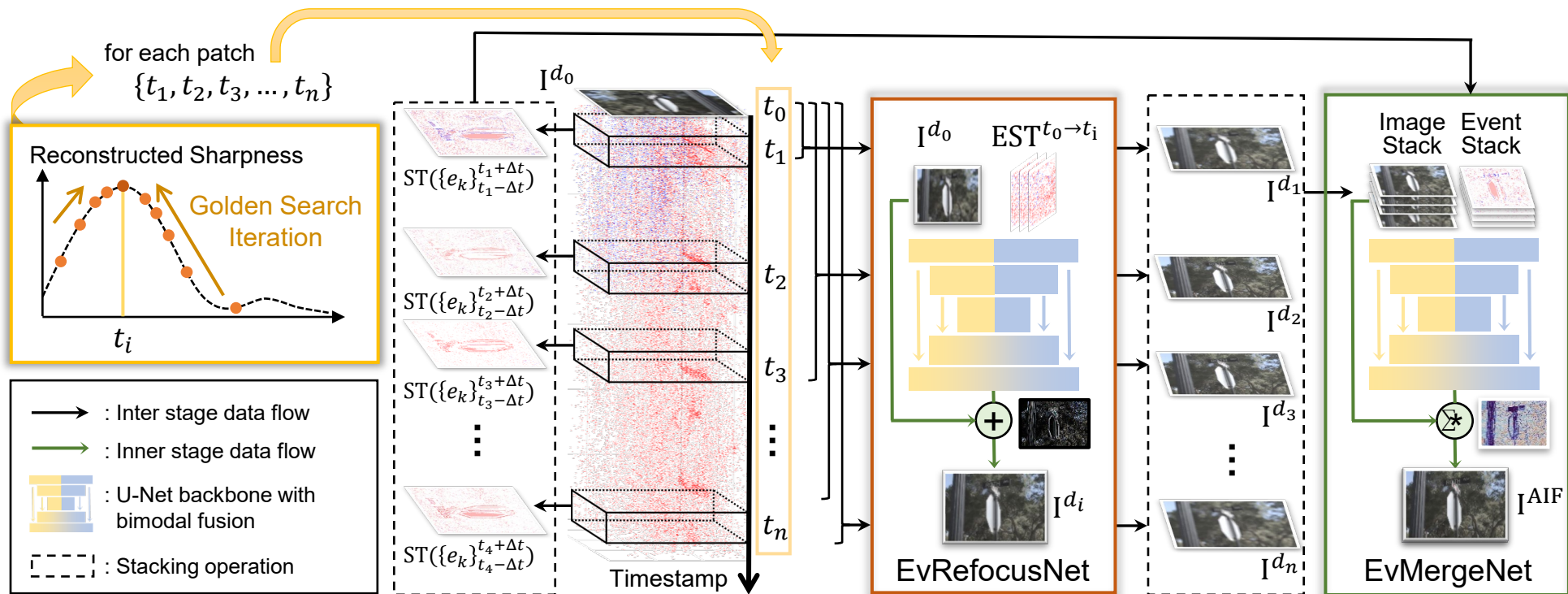
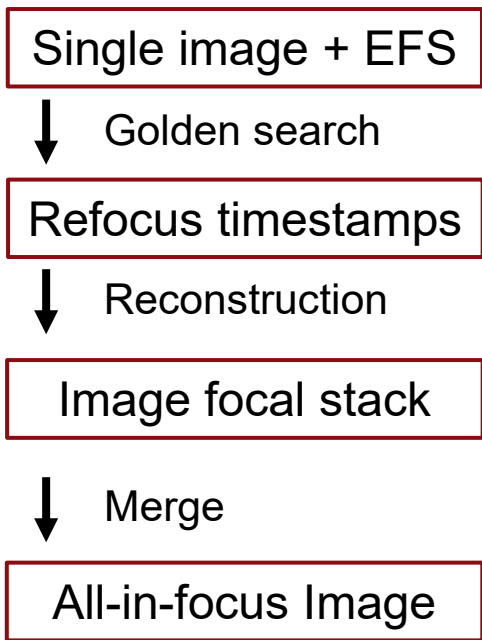


Scene



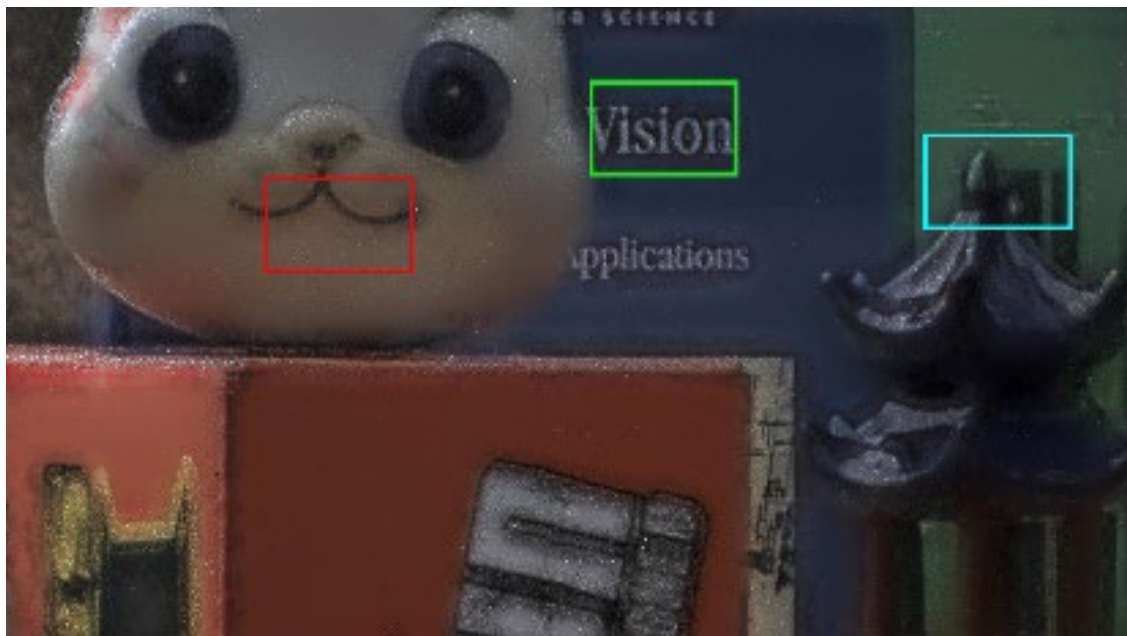
Focal Depths

# Abstract

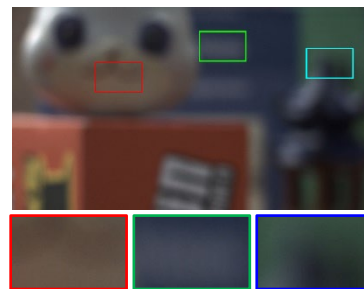




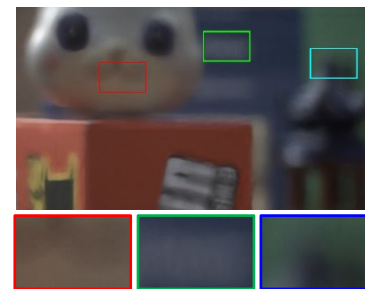
# Abstract



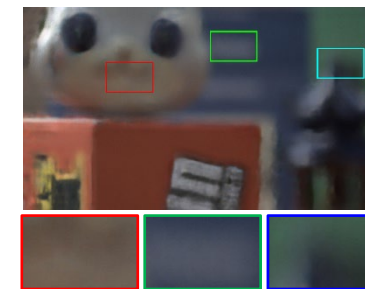
Ours



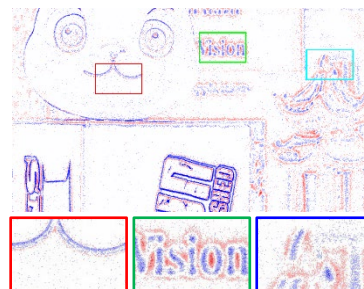
Defocused Image



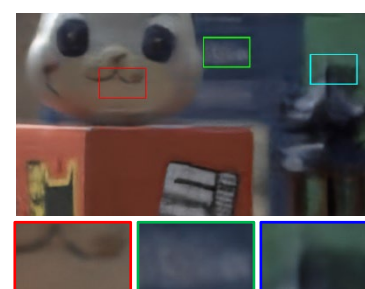
DRBNet



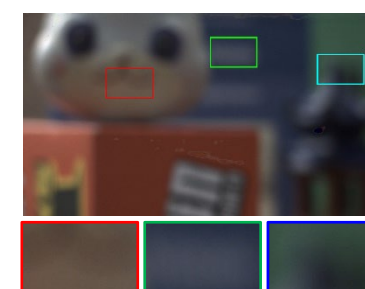
KPAC



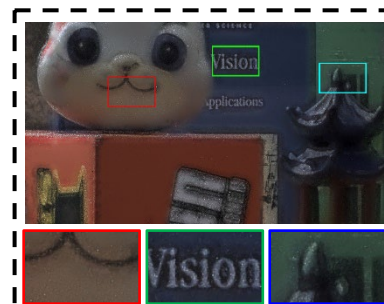
Events



IFAN



APL



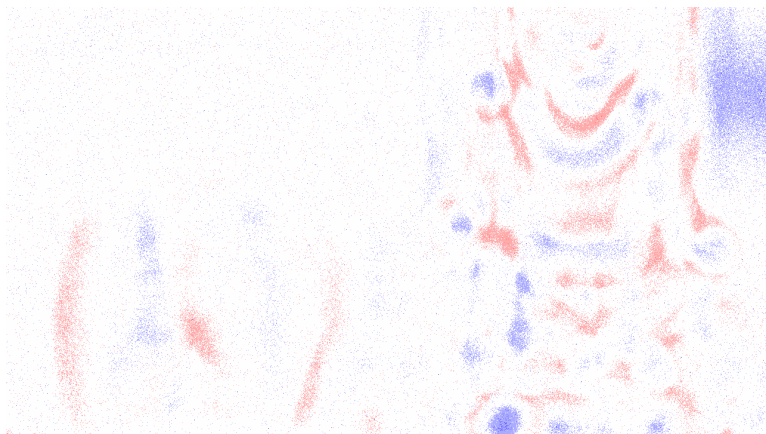
Ours



# Abstract



Input Events



Input Image



Refocus Results

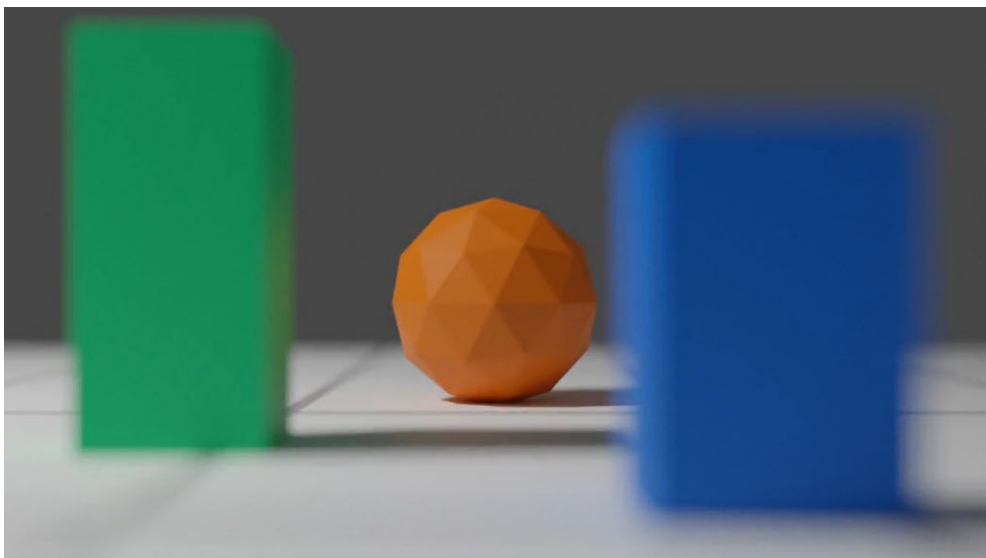




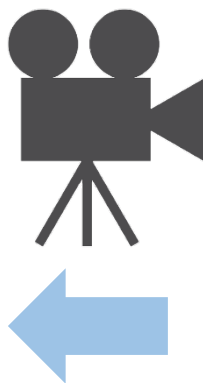
# Previous Works



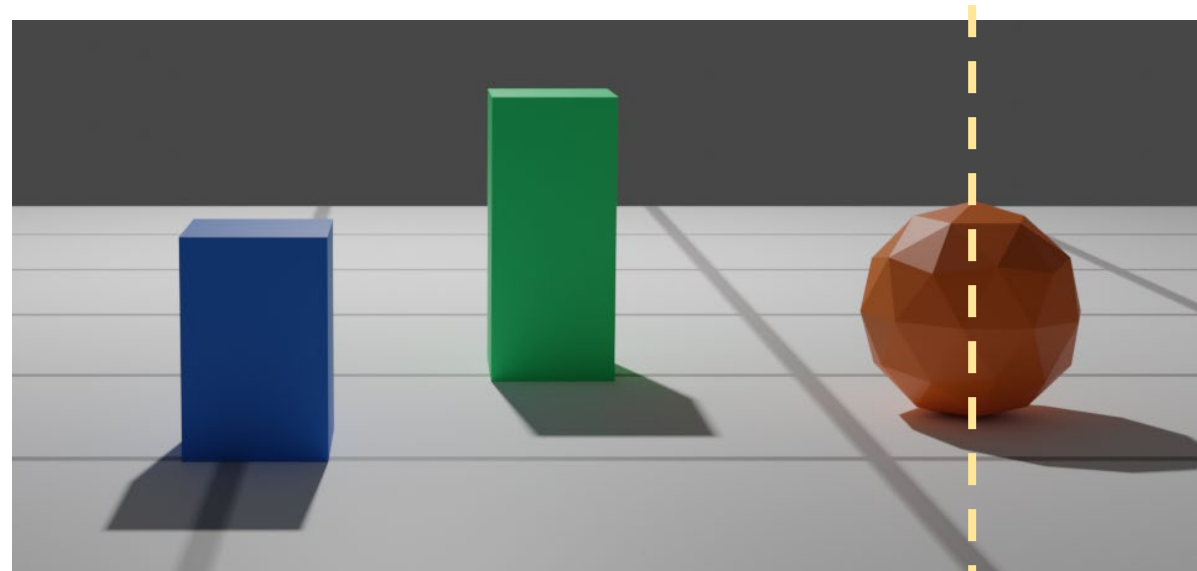
Traditional Camera



One depth in focus



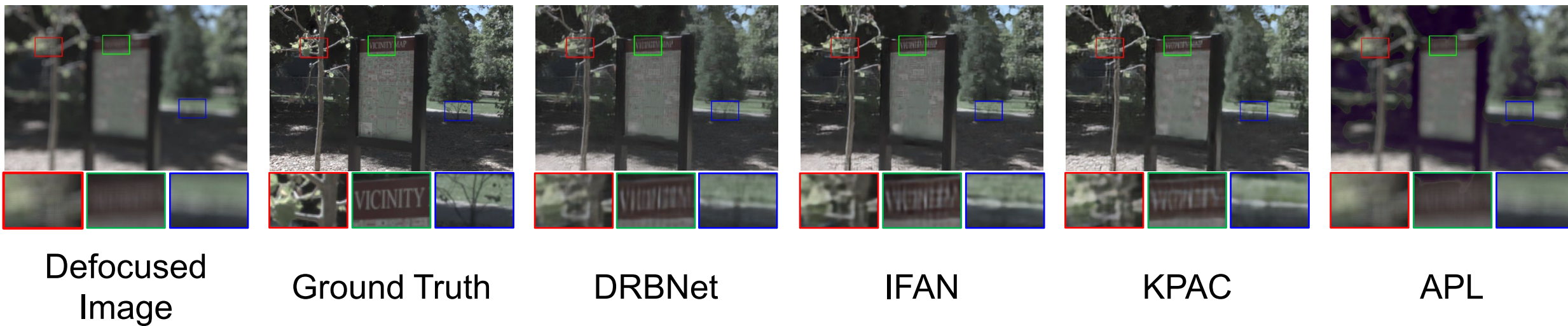
Scene



Focal Depth



# Previous Works



**Image-based Methods:** High frequency information cannot be recovered due to the ill-posed nature of single image defocus deblur.

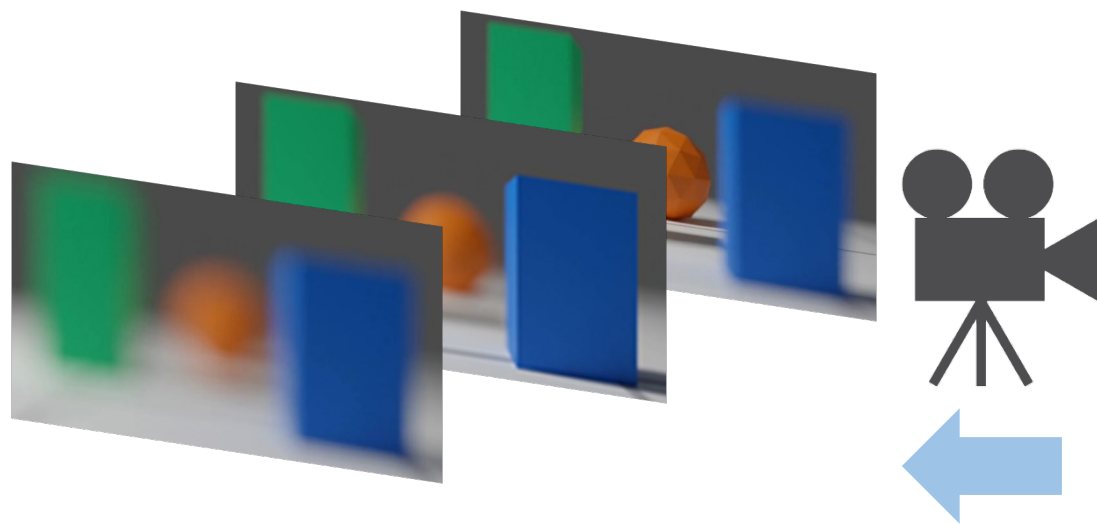




# Previous Works

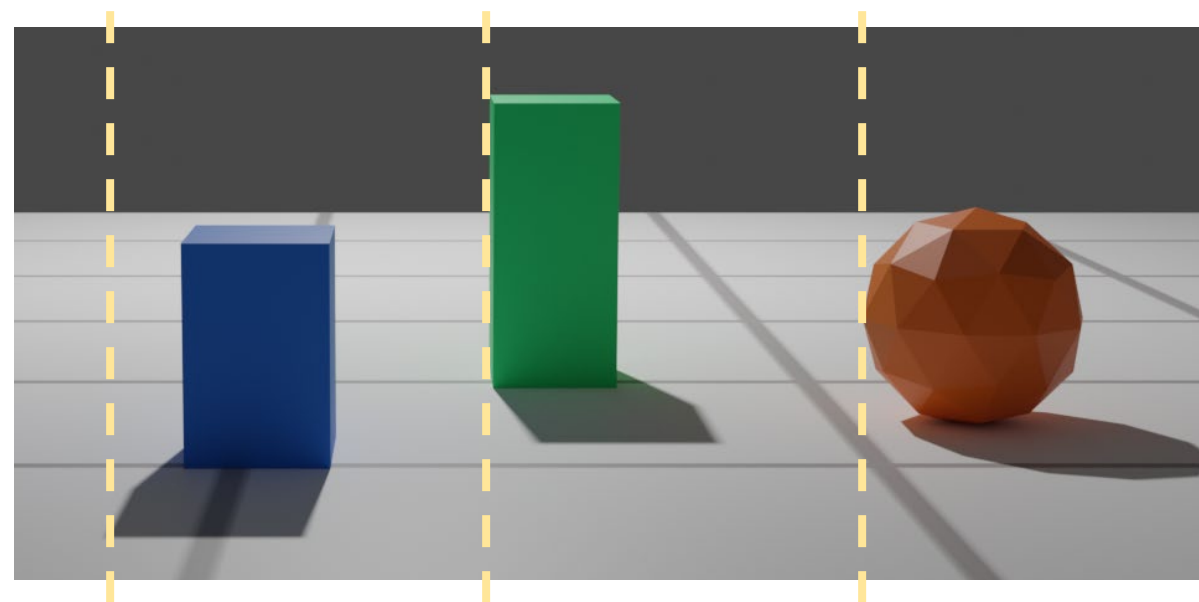


Frame-based Focal Stack



Multiple depths in focus

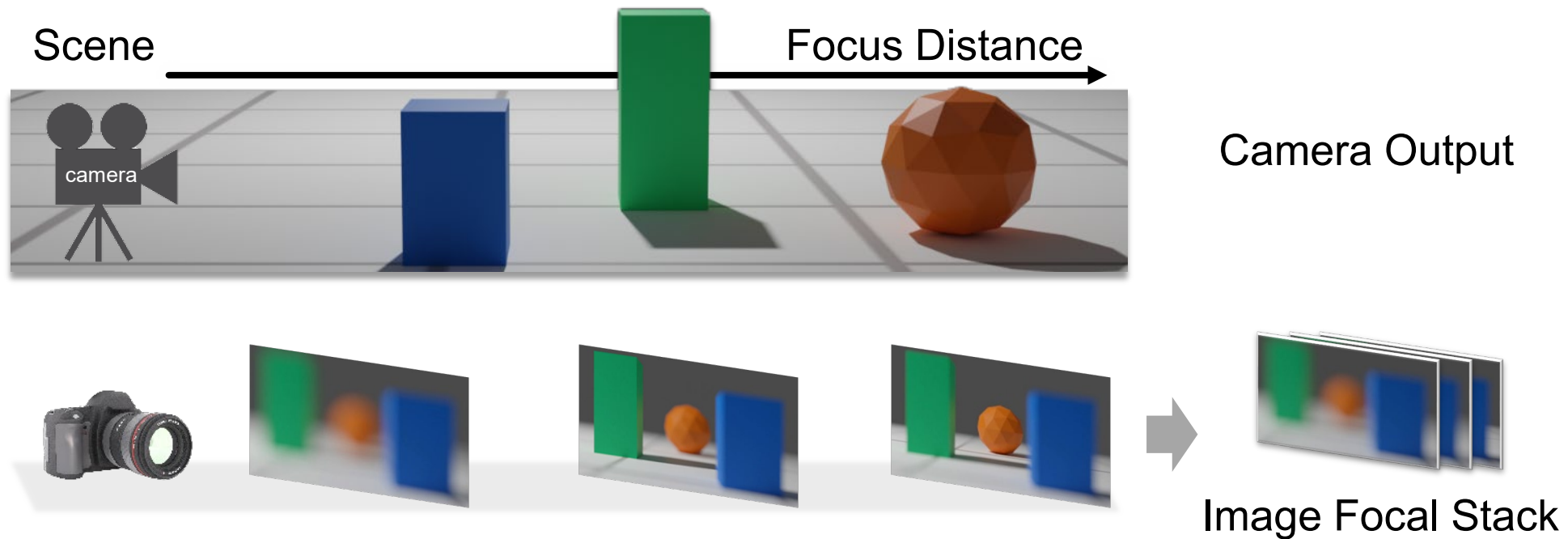
Scene



Focal Depths



# Previous Works

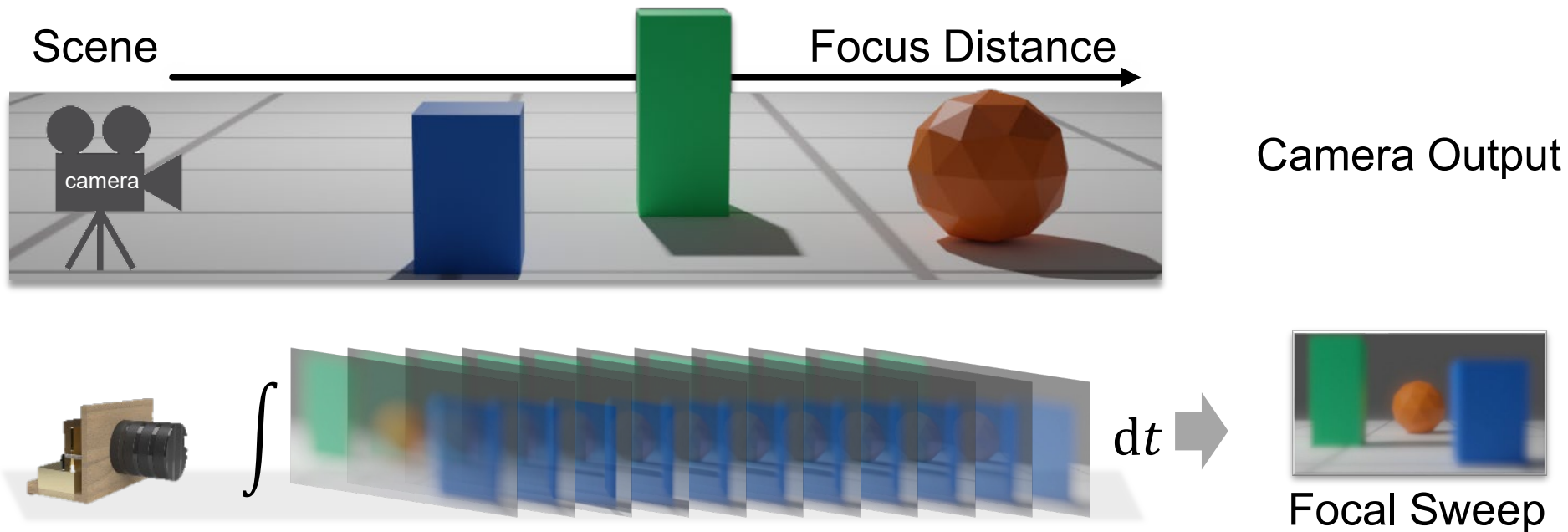


## Image Focal Stack:

Requires careful operation & consumes long time;  
Information is only collected at a discrete number of focal distances.



# Previous Works



## Focal sweep:

By sweeping the focal point in a single exposure, information is collected from all depths, but the depth information is lost.



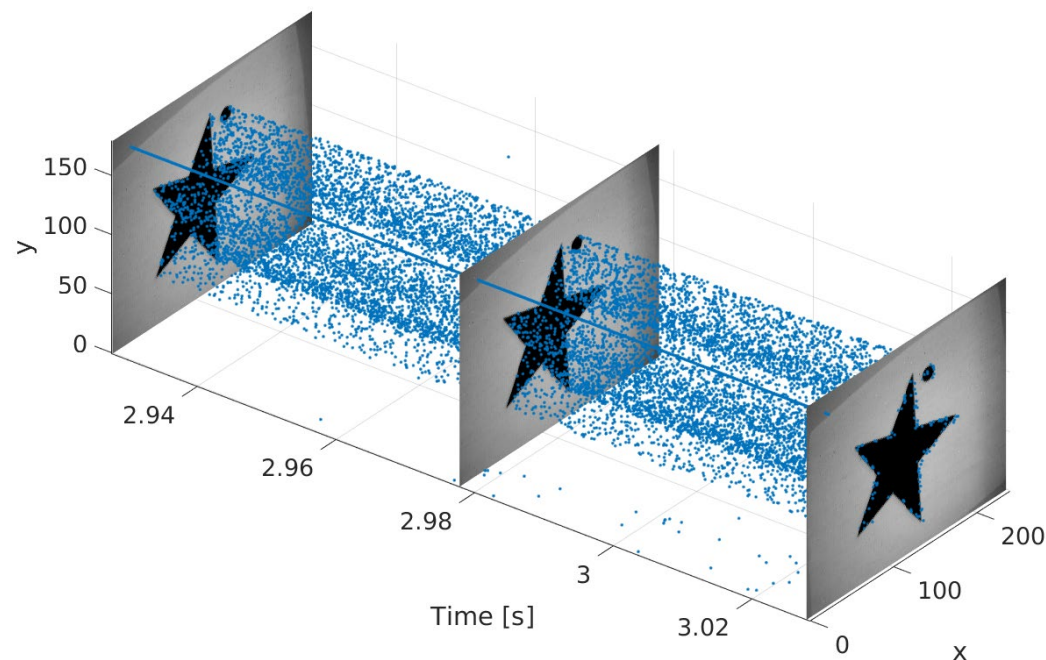
# Event Camera



- Event cameras have novel sensors that measure only motion in the scene.



\*Video courtesy of Elias Mueggler

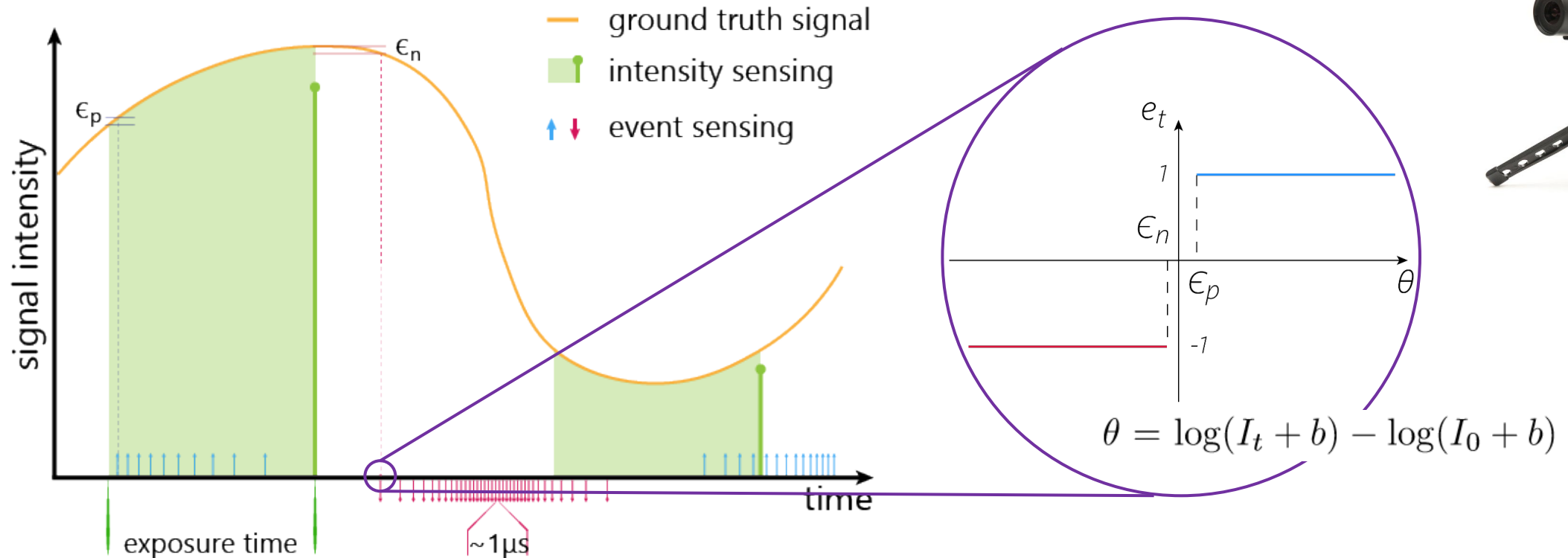




# Event Camera



- Events are generated any time a single pixel sees a change in brightness larger than the threshold.

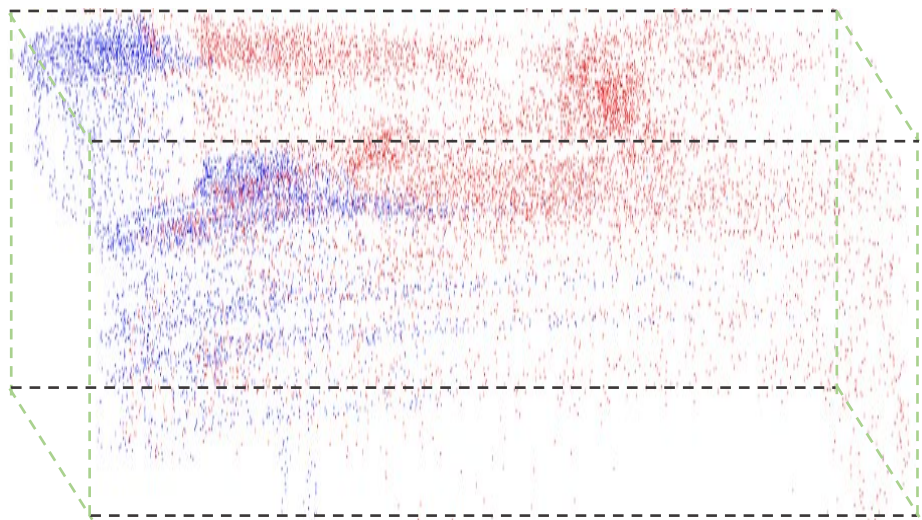




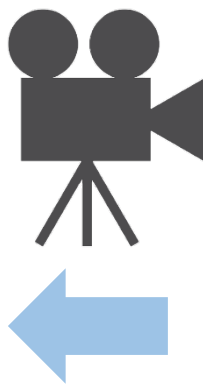
# Problem Formulation



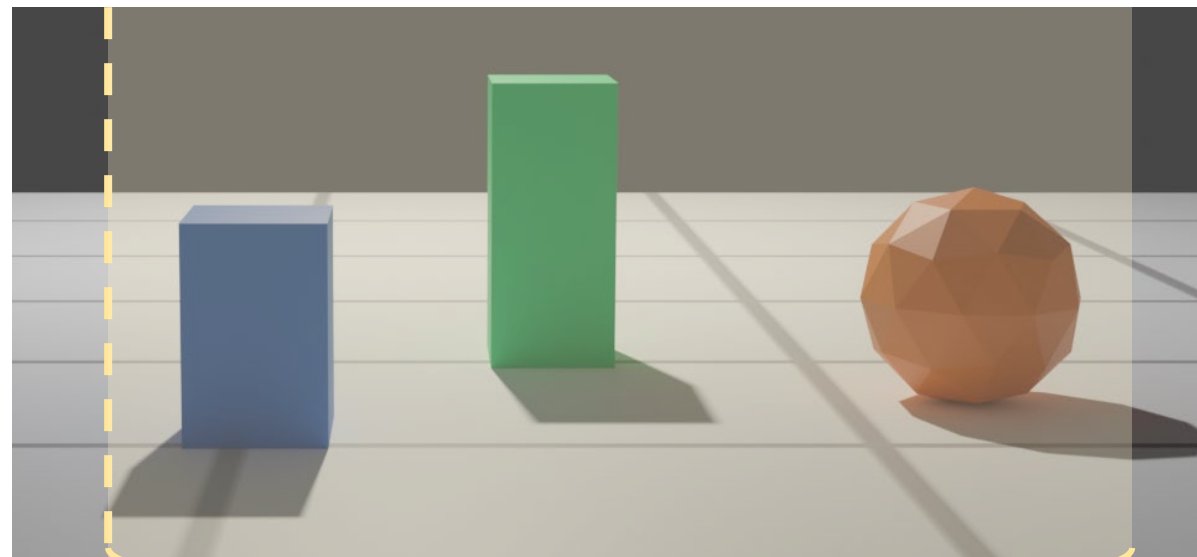
Event Focal Stack



All depths in focus



Scene



Focal Depths

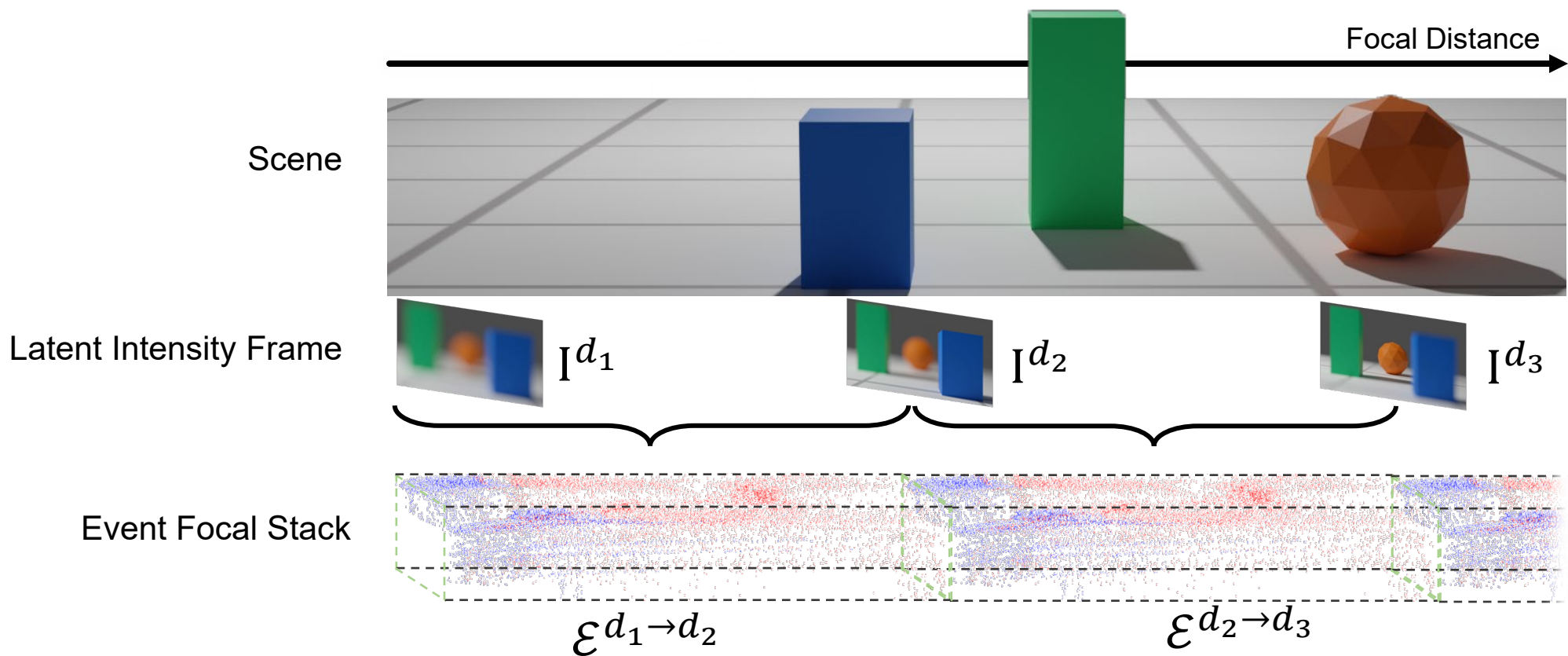


# Problem Formulation



$$\log(I^{d_j}) = \log(I^{d_i}) + \sum \xi^{d_i \rightarrow d_j}$$

The latent intensity frame changes as the focal point moves. Events encode the logarithm change of latent intensity.



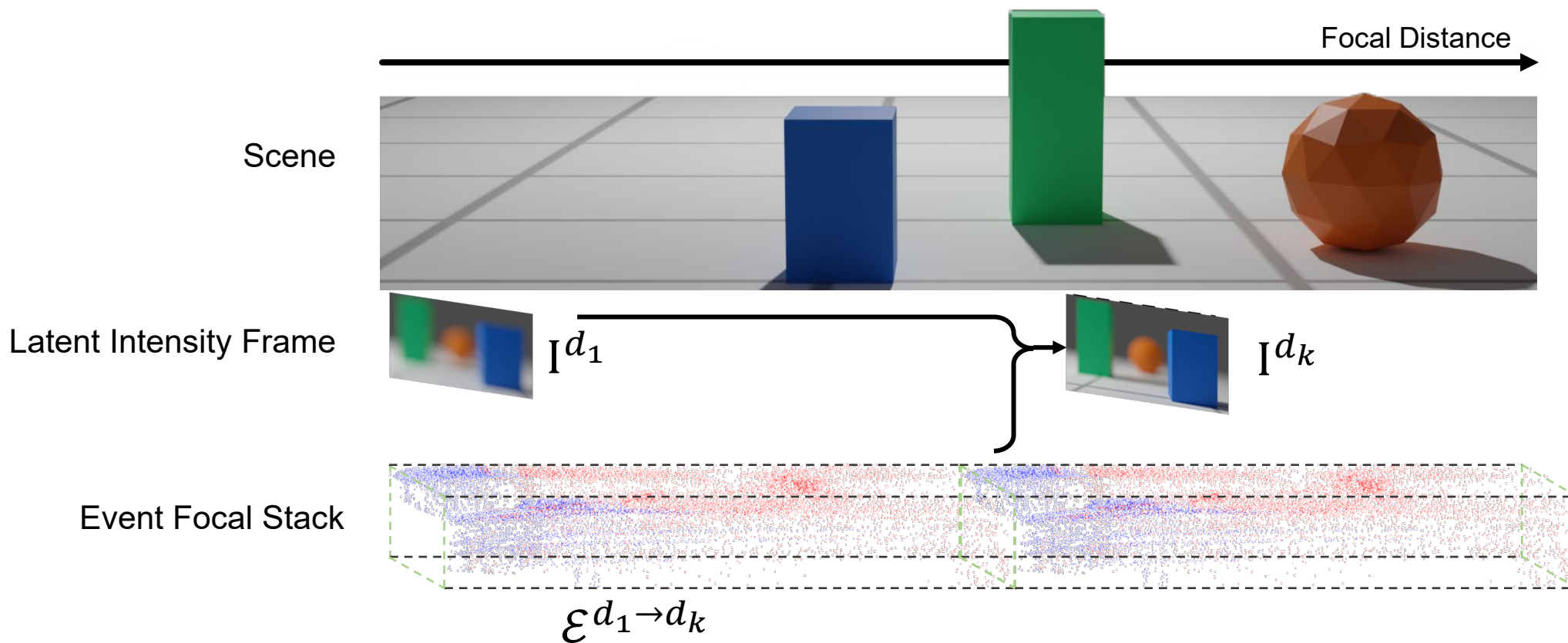


# Problem Formulation



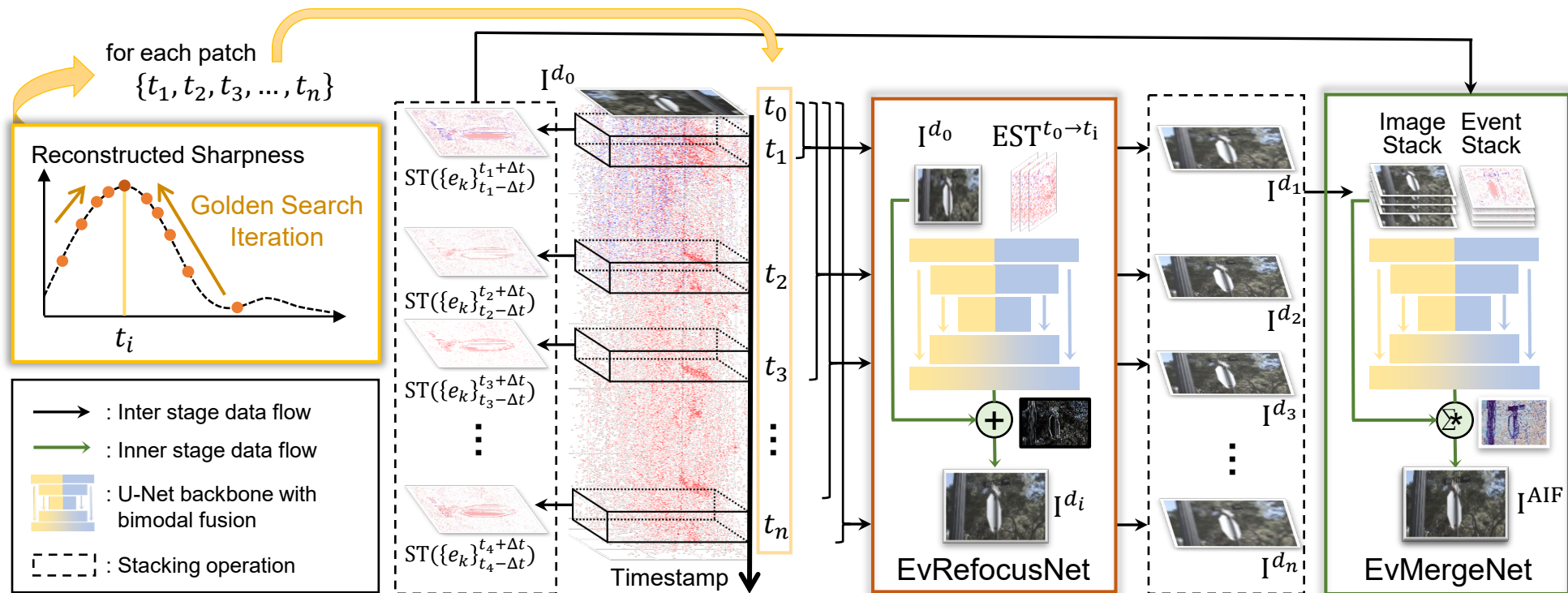
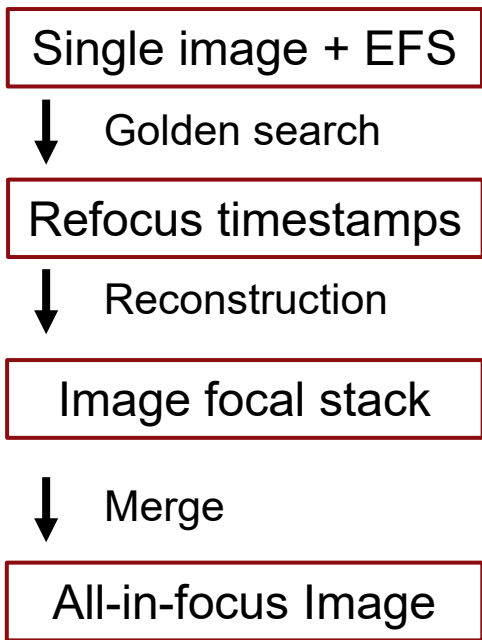
$$\log(I^{d_j}) = \log(I^{d_i}) + \sum \mathcal{E}^{d_i \rightarrow d_j}$$

Given a defocused image and the EFS, we can reconstruct the latent image focused at any distance.





# Method



# Golden Search for Refocus Timestamps



---

## Algorithm 1 Refocusing time selection with EFS

---

**Data:** threshold  $\mu$ , golden ratio  $\varphi = 1.618$

**Input:** EFS  $\mathcal{E}$  and an RGB image  $\mathbf{I}^d$

**Result:** Refocusing timestamp  $t_r$

$L \leftarrow 0, R \leftarrow N_e$

**while**  $R - L > \mu$  **do**

$t_1, t_2 \leftarrow R - (R - L)/\varphi, L + (R - L)/\varphi$

    Reconstruct  $\mathbf{I}^{d_1}, \mathbf{I}^{d_2}$  with Equation (5)

**if**  $\mathbb{D}(\mathbf{I}^{d_1}) > \mathbb{D}(\mathbf{I}^{d_2})$  **then**  $R \leftarrow t_2$

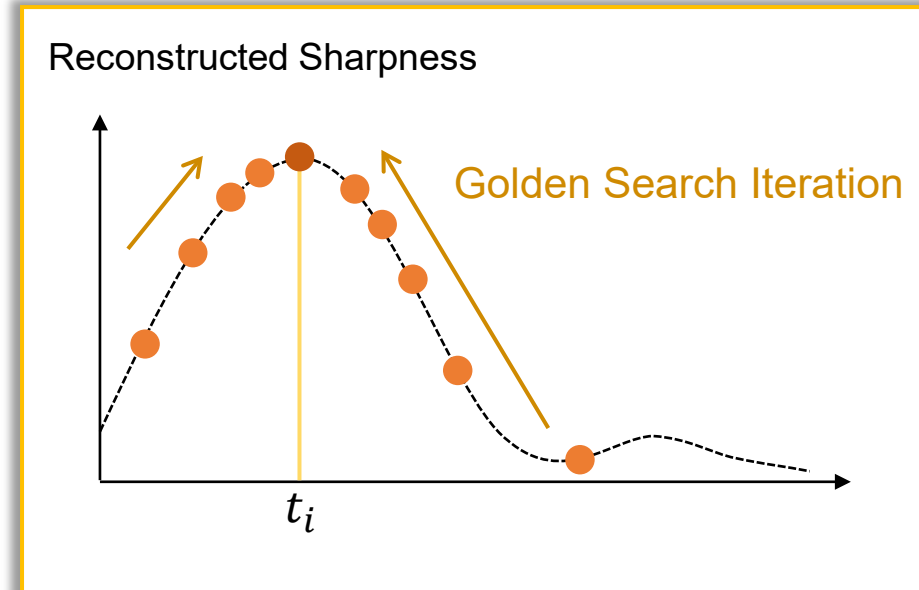
**else**  $L \leftarrow t_1$

**end if**

$t_r \leftarrow (L + R)/2$

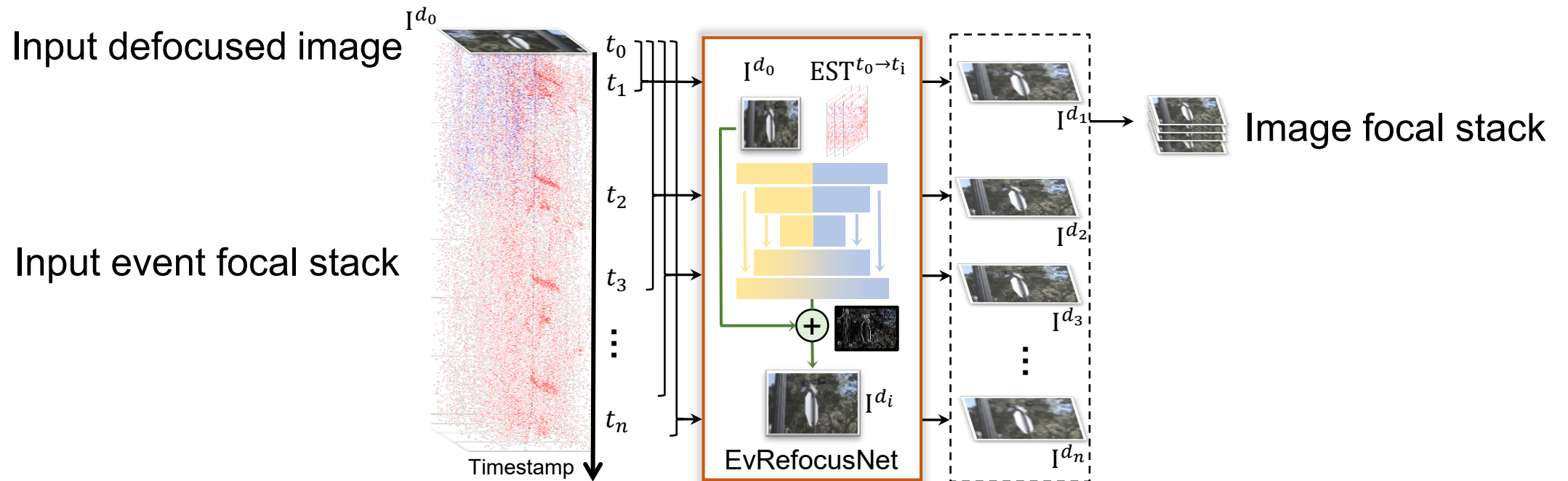
**end while**

---



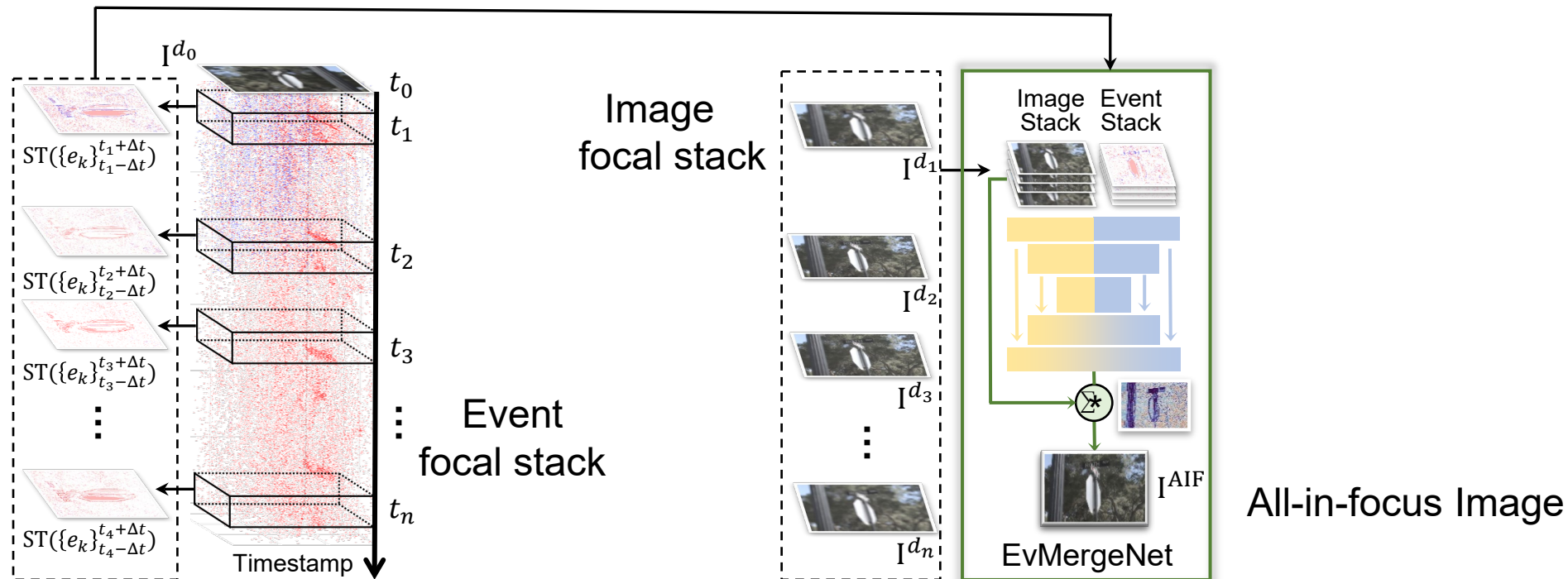
**Step 1:** For each patch of the image, we use the Golden Rate Search Algorithm to find the moment when it was in focus, getting  $N \times N$  refocus timestamps (one for each patch).

# Image Refocusing



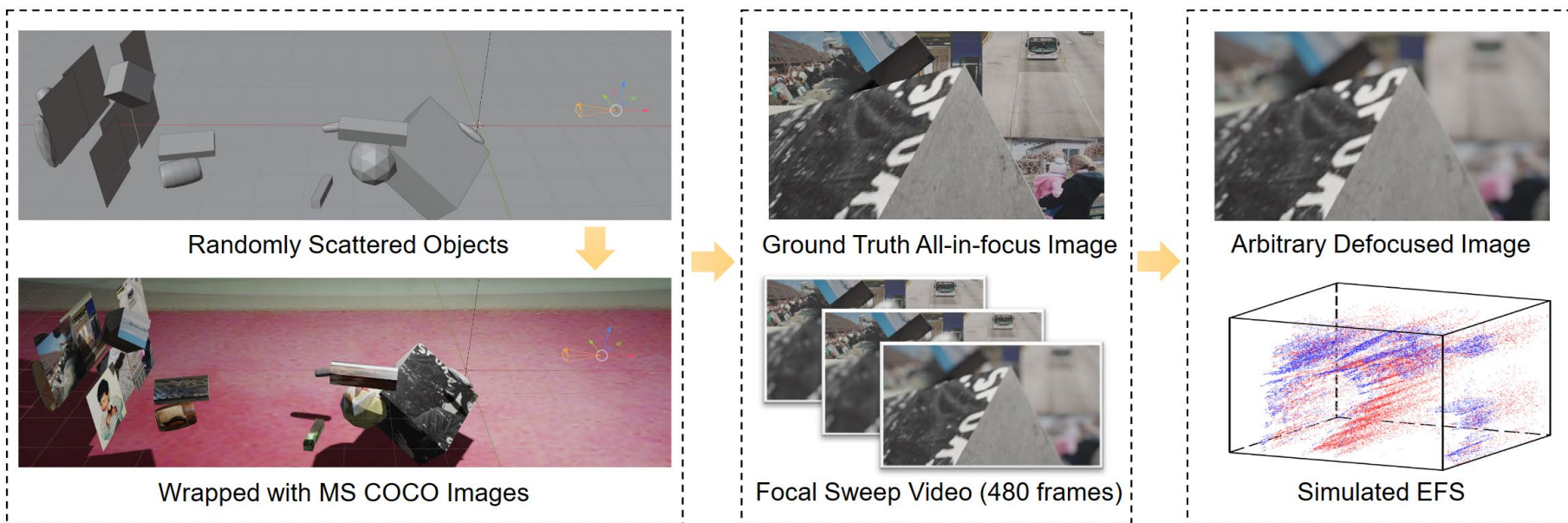
**Step 2:** For each refocus timestamp, we use EvRefocusNet to reconstruct a refocused image from the input image + event focal stack, forming an image focal stack.

# Merging Focal Stack



**Step 3:** We predict merging weights with EvMergeNet, using image focal stack and events as input. We merge the focal stack with weights to get all-in-focus result.

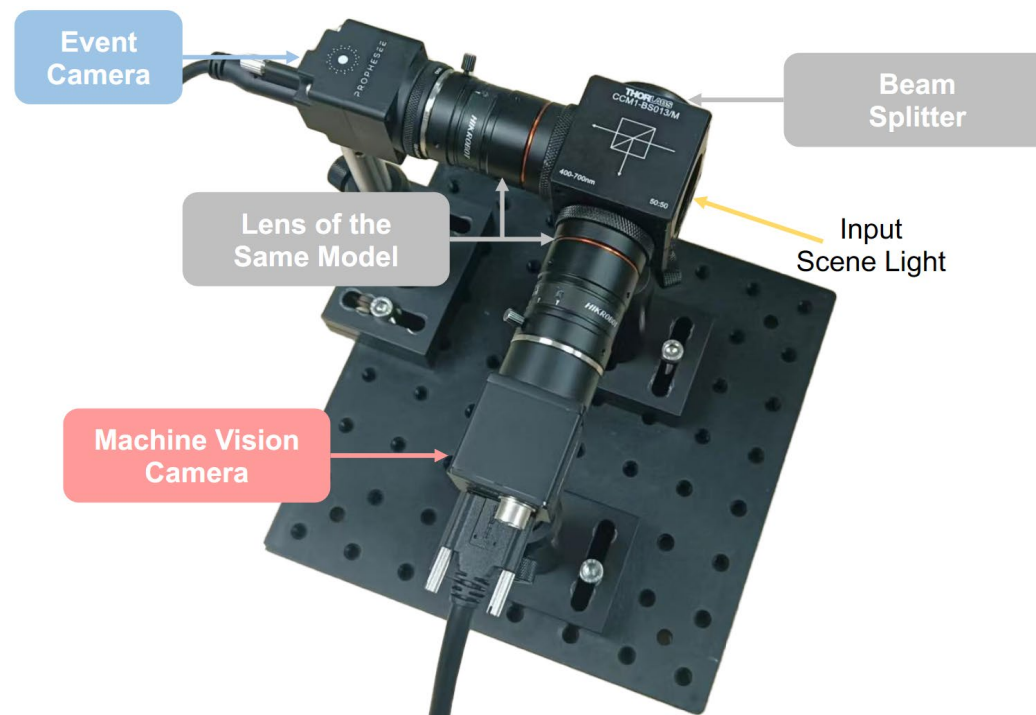
# Training Dataset



- We use Blender to render high-frame-rate focal sweep videos & ground truth all-in-focus images.
- We use MS COCO dataset images to enrich object textures.
- We use DVS-Voltmeter to simulate events from focal sweep videos. To prevent overfitting, we use random simulator parameters in each video.



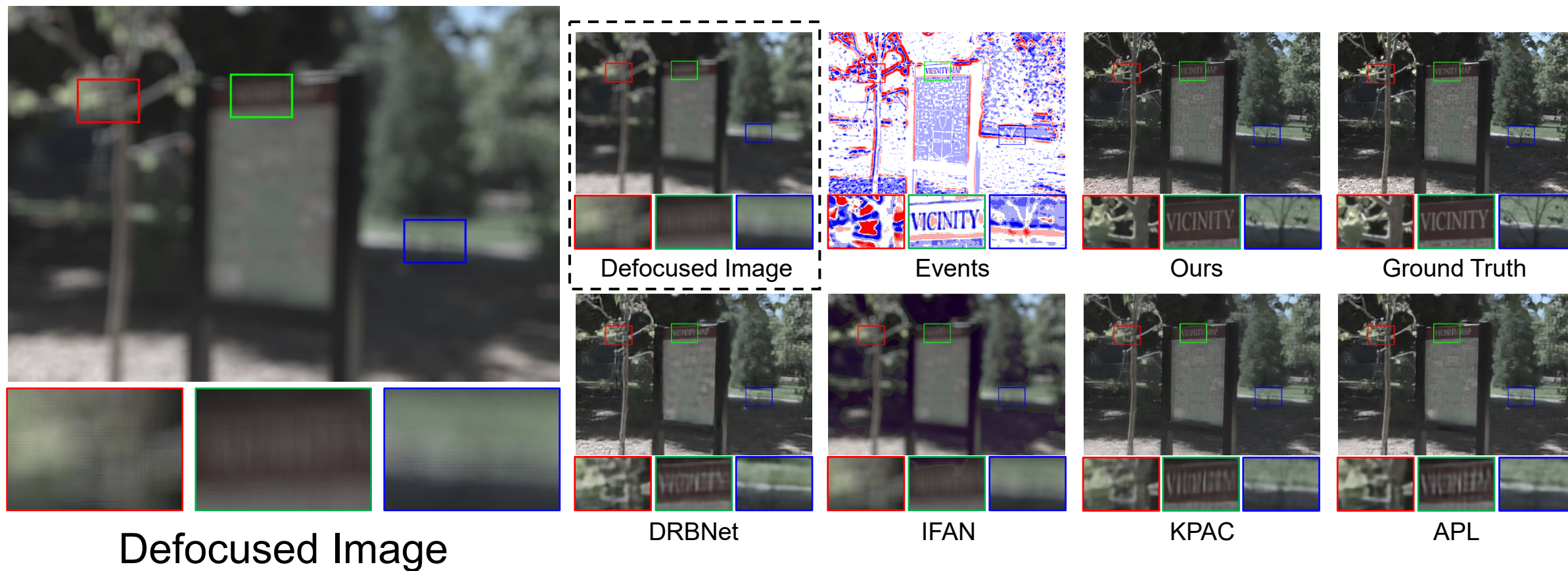
# Test Dataset



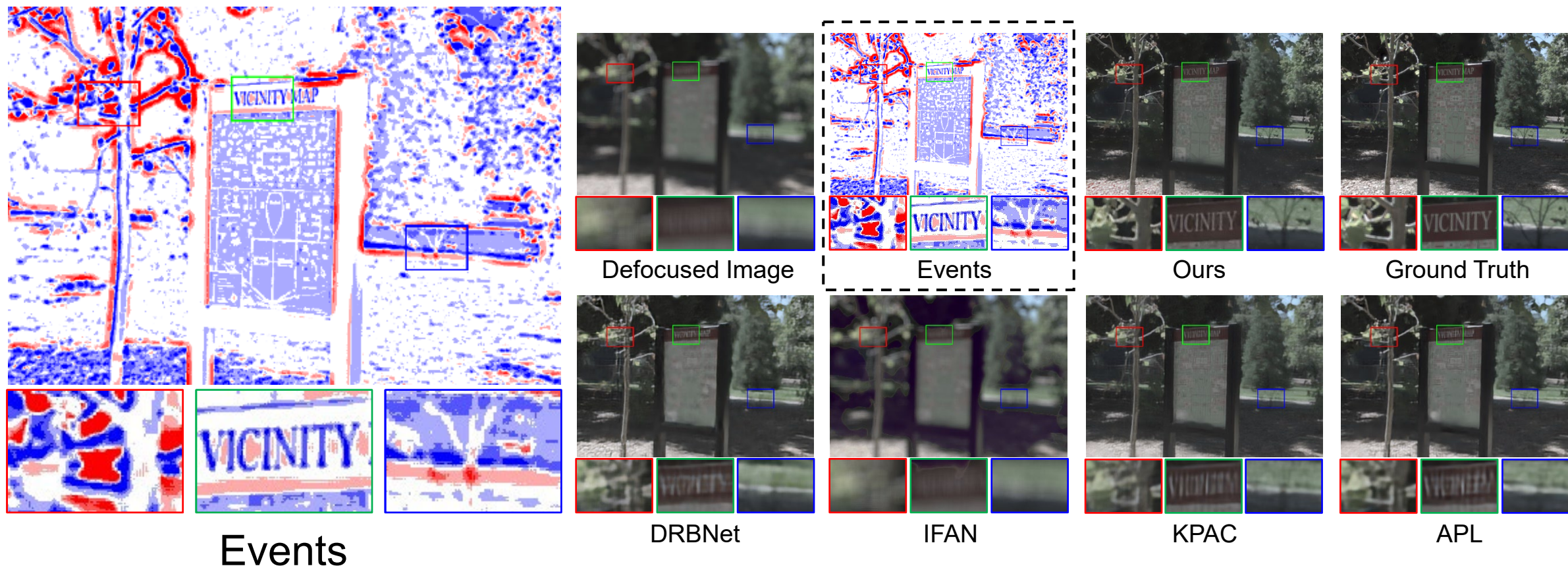
- We use a hybrid camera system to capture real test data.



# Results on Synthetic Data

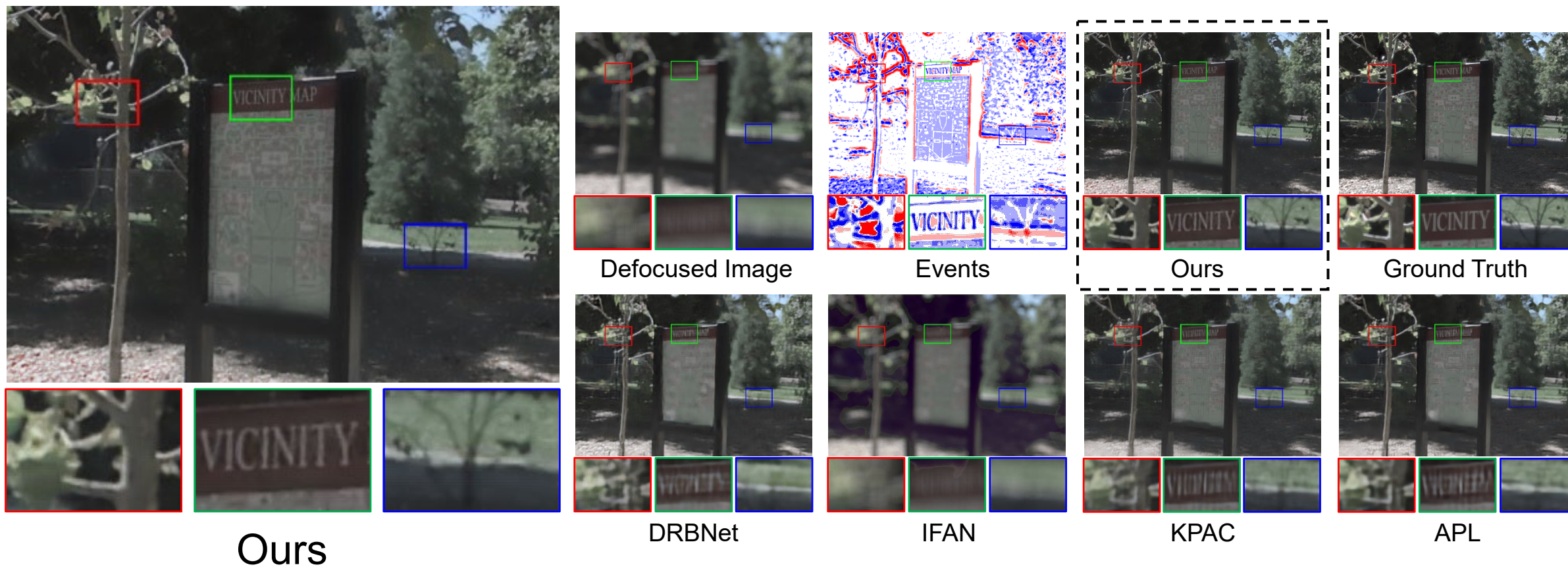


# Results on Synthetic Data



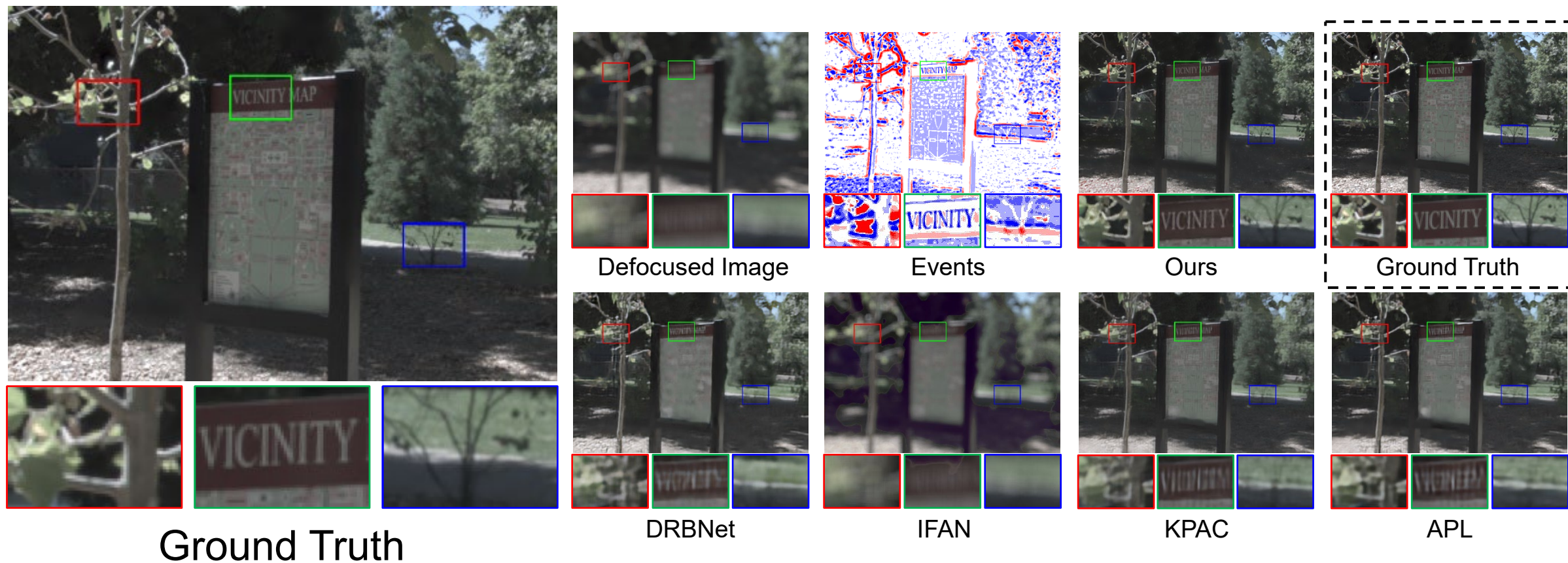


# Results on Synthetic Data



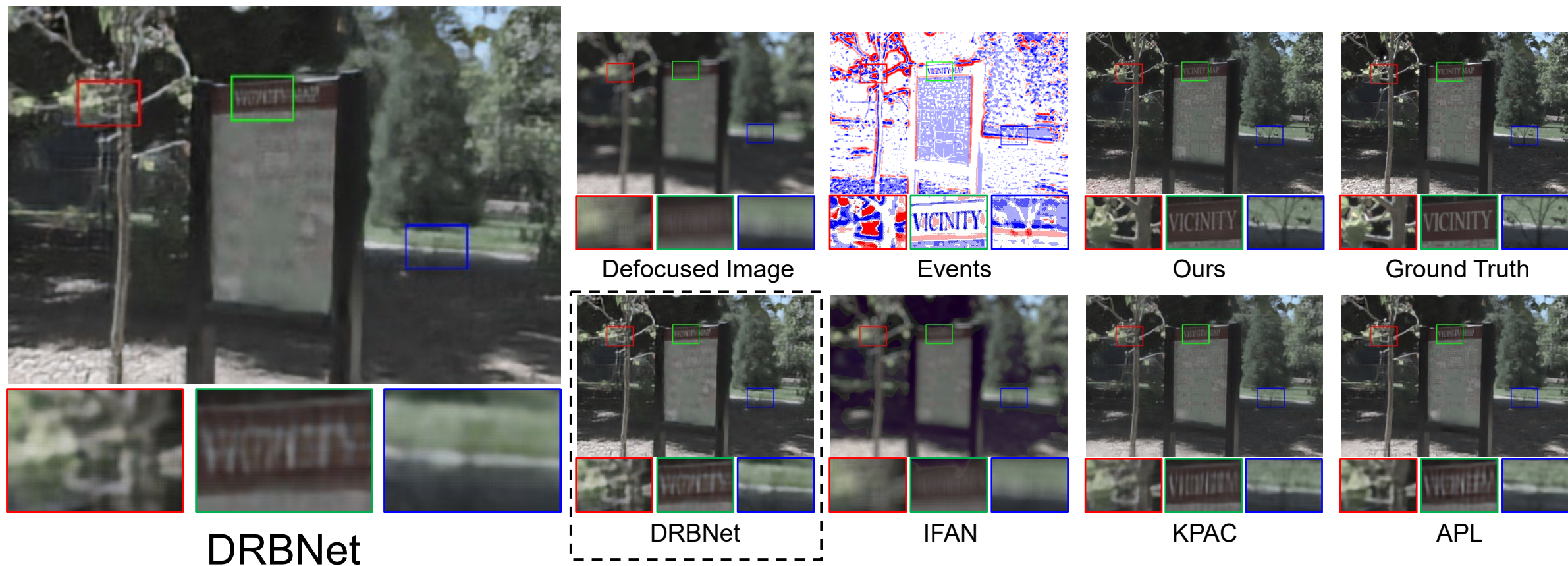


# Results on Synthetic Data



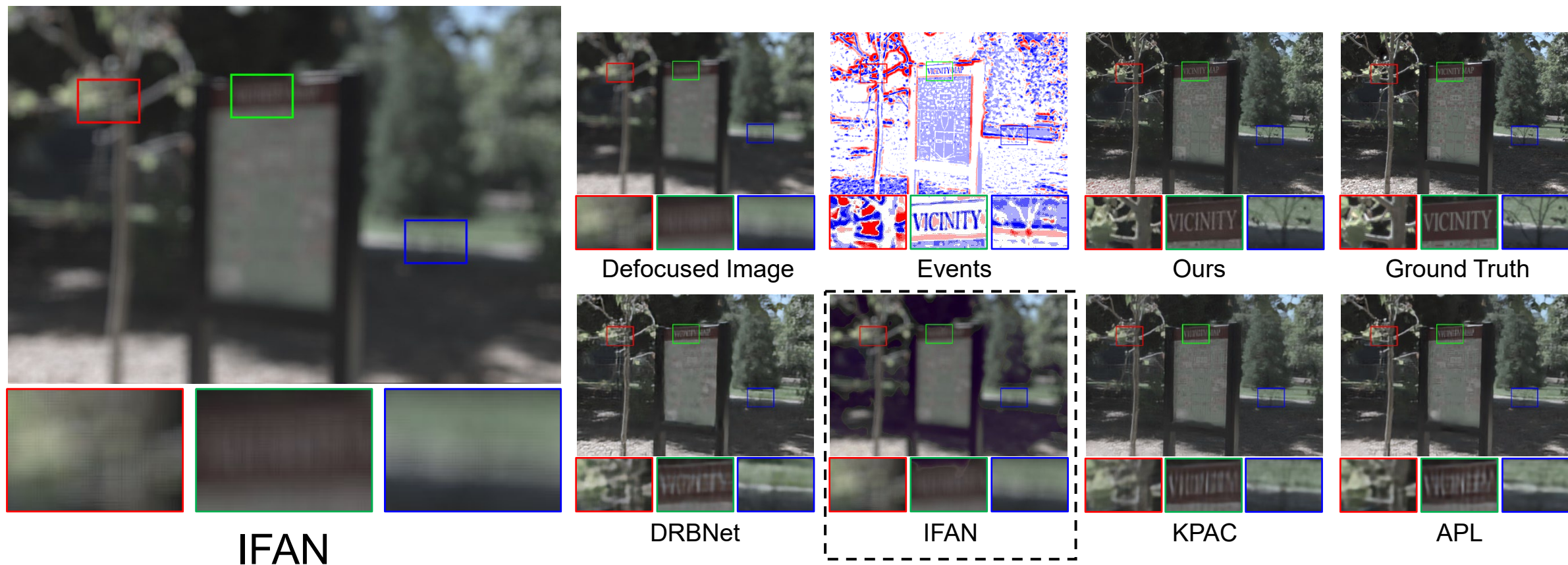


# Results on Synthetic Data



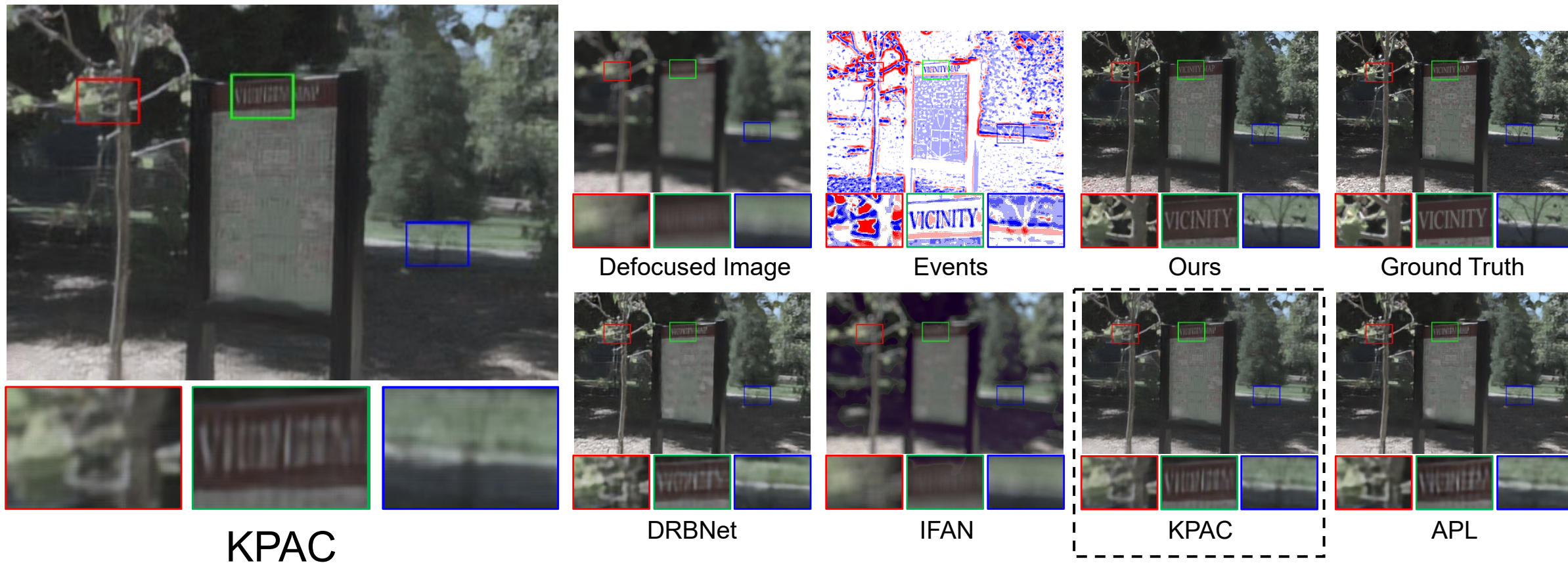


# Results on Synthetic Data



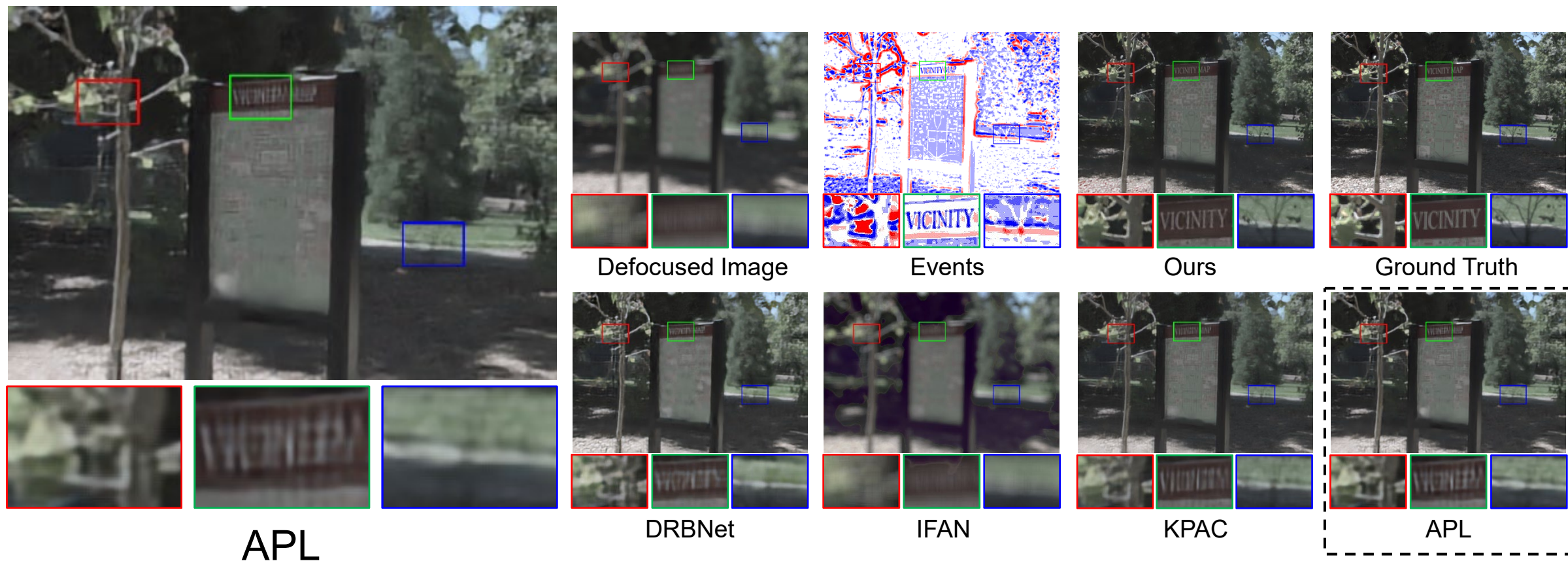


# Results on Synthetic Data



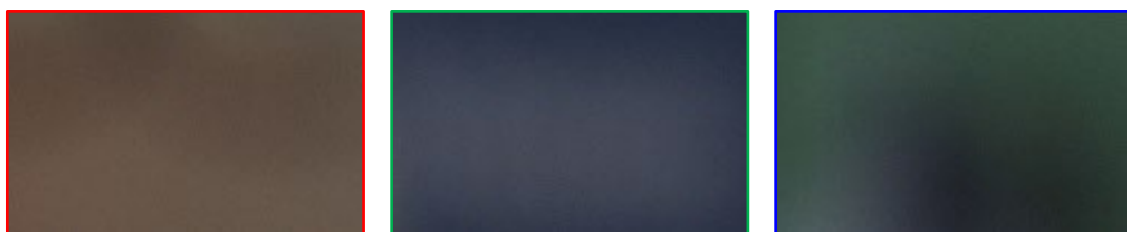
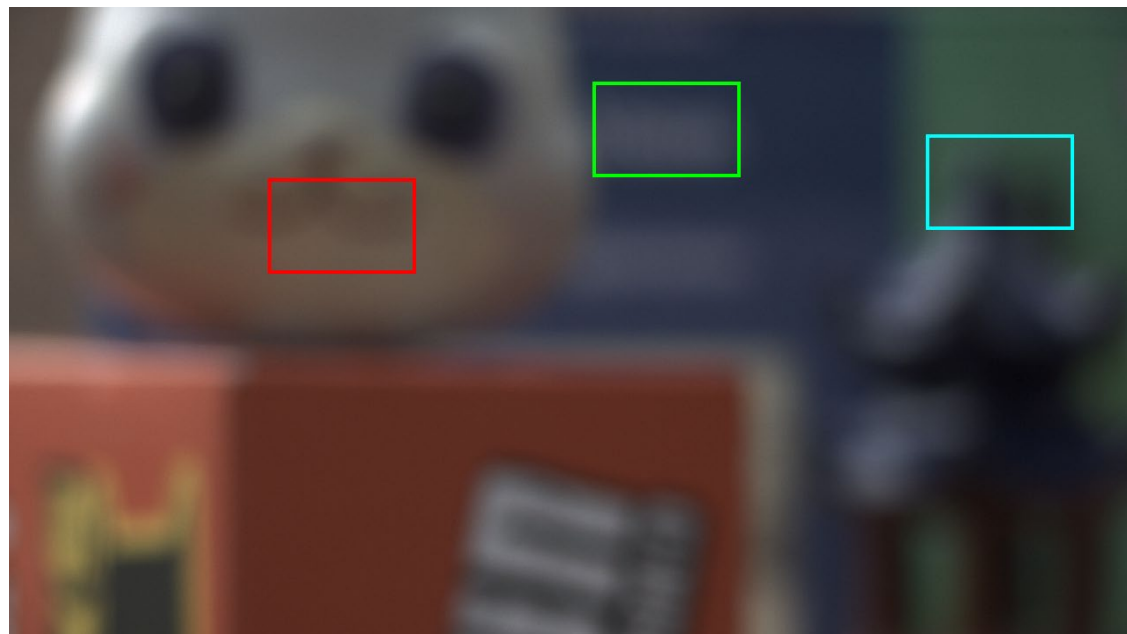


# Results on Synthetic Data

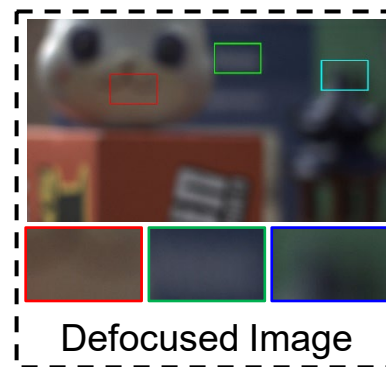




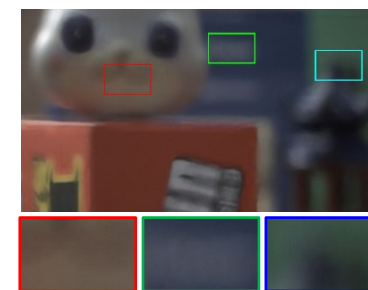
# Results on Real Data



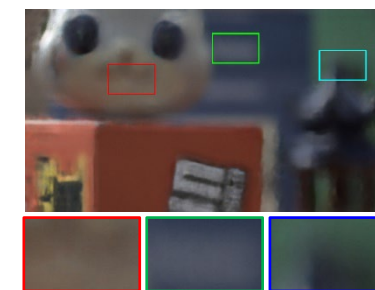
Defocused Image



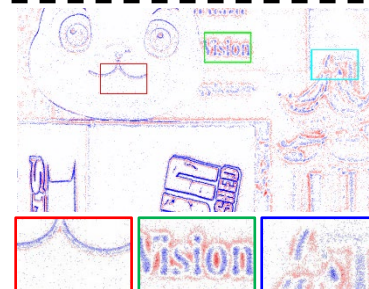
Defocused Image



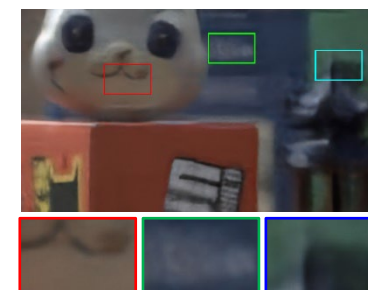
DRBNet



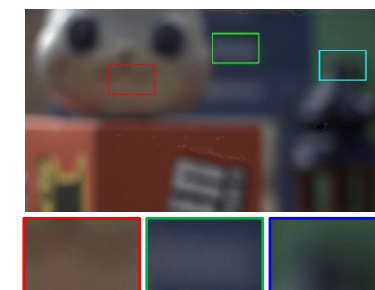
KPAC



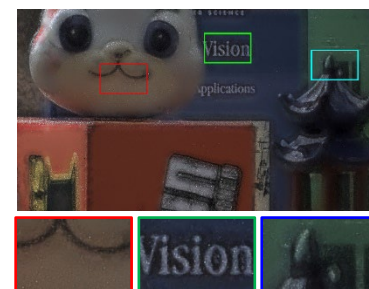
Events



IFAN



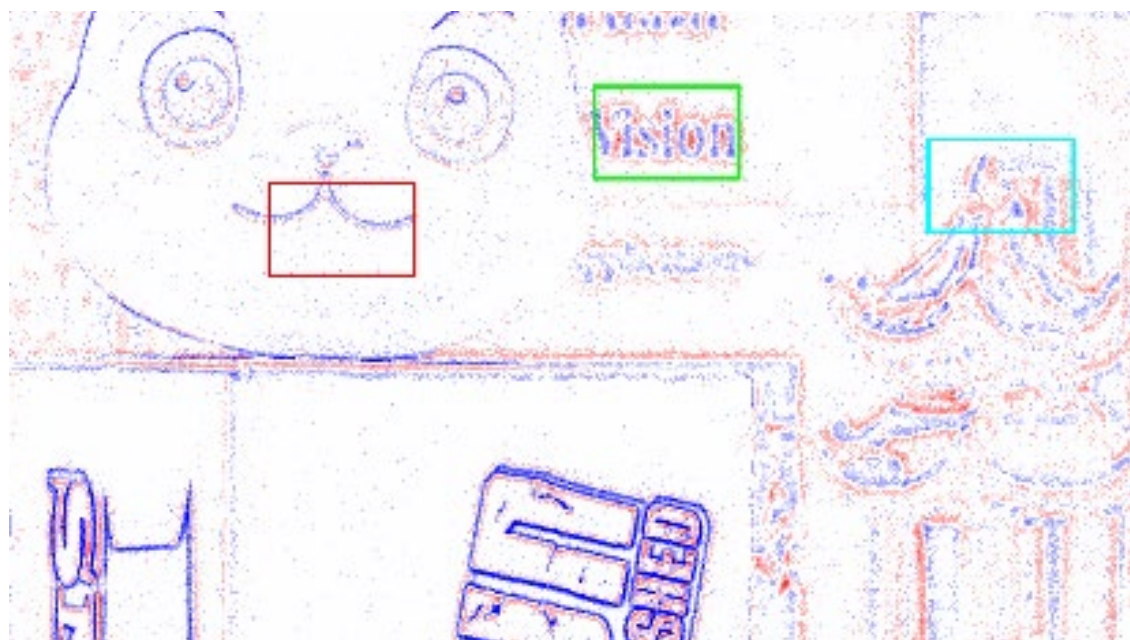
APL



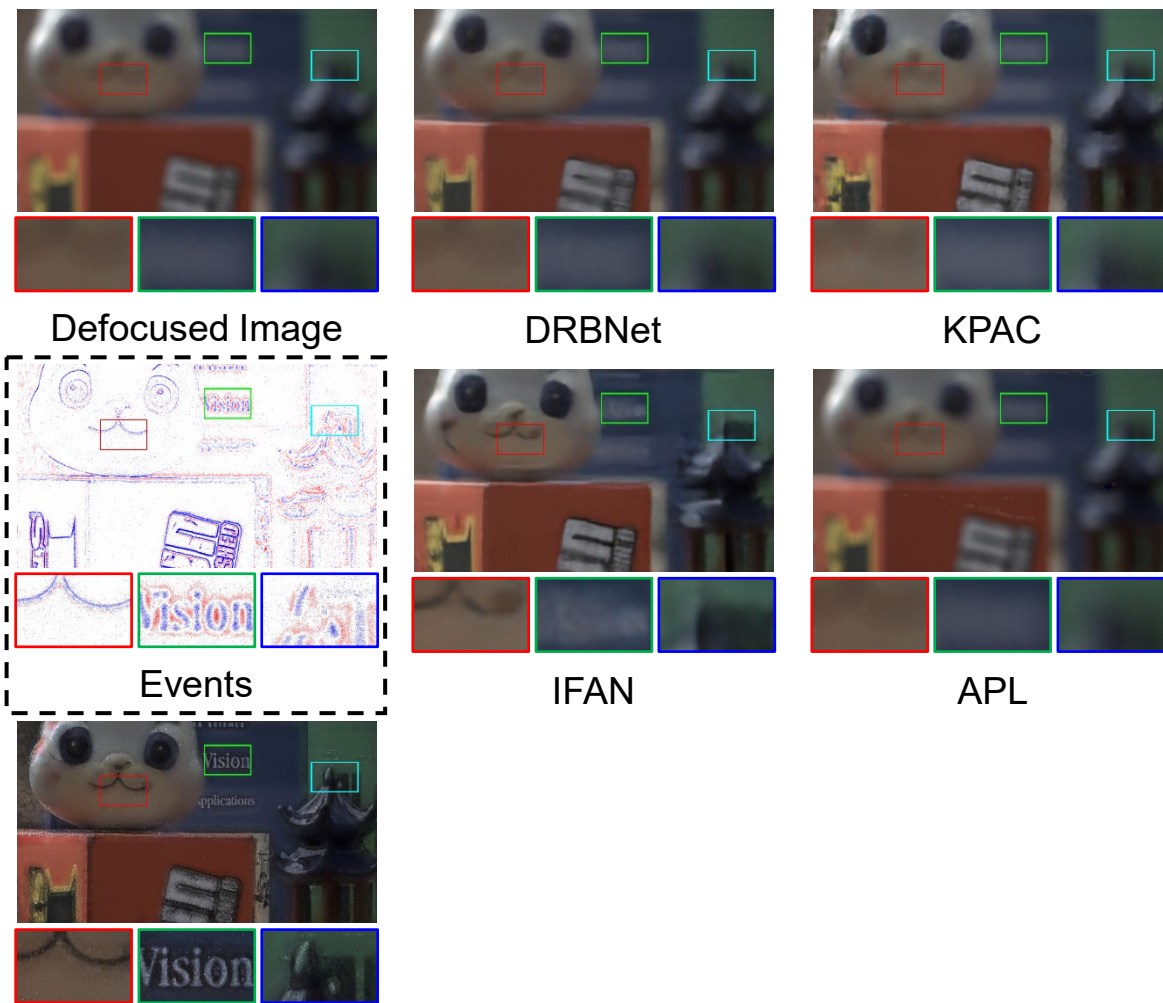
Ours

Image-based defocus: [DRBNet, CVPR 2022], [IFAN, CVPR 2021], [KPAC, ICCV 2021], [APL, ECCV 2022]

# Results on Real Data



Events

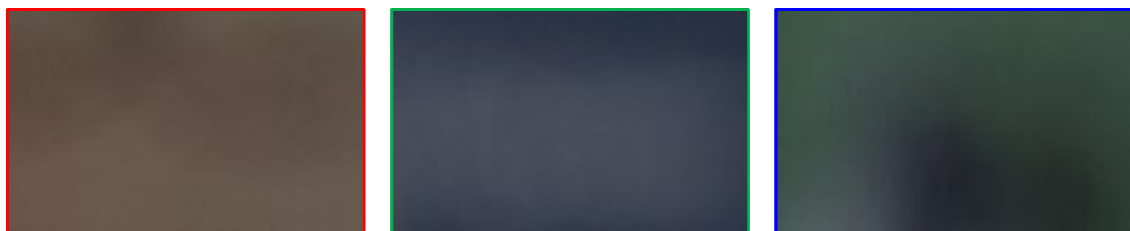
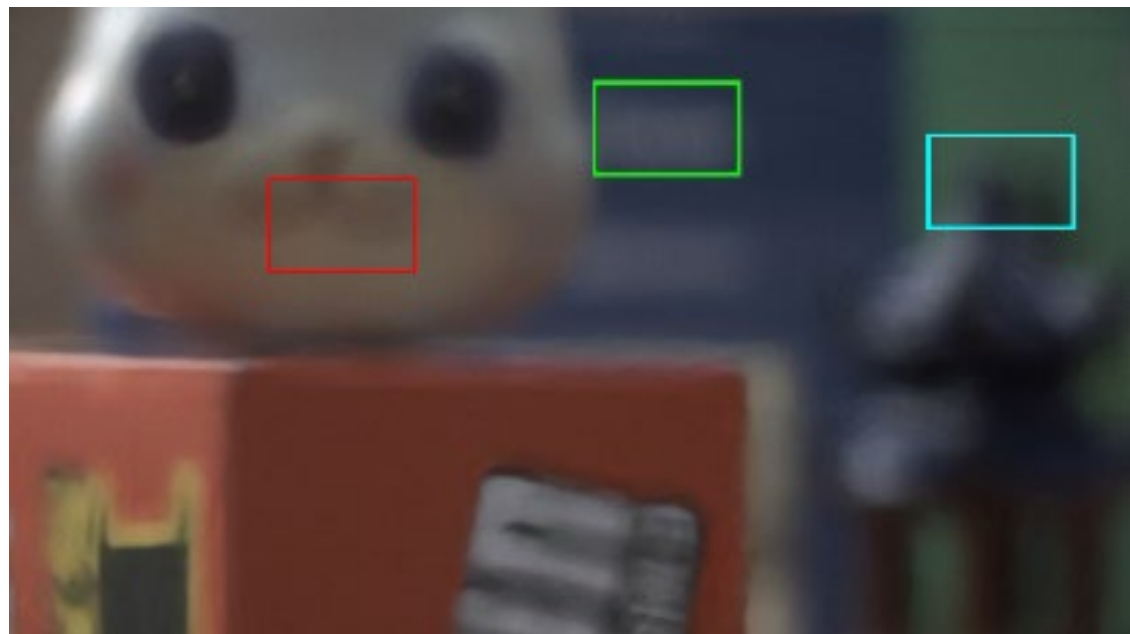


Ours

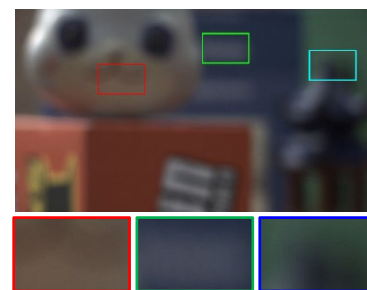




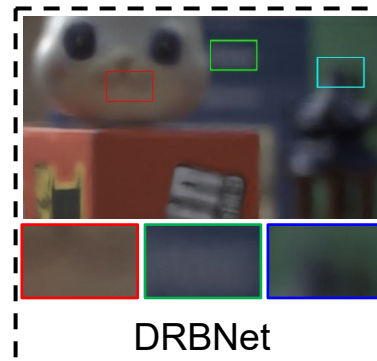
# Results on Real Data



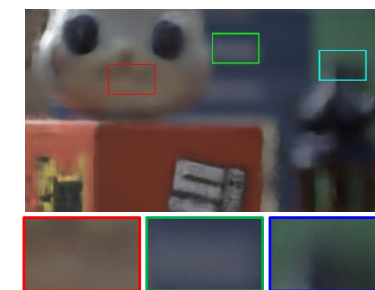
DRBNet



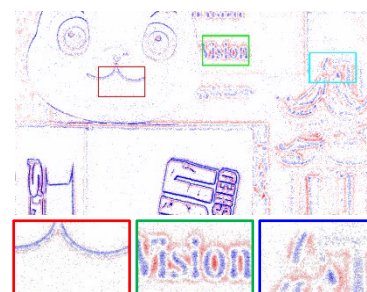
Defocused Image



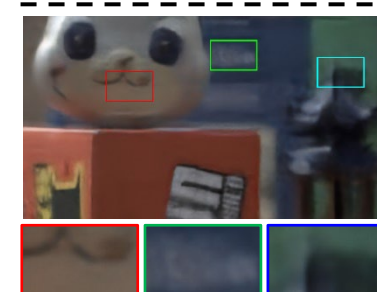
DRBNet



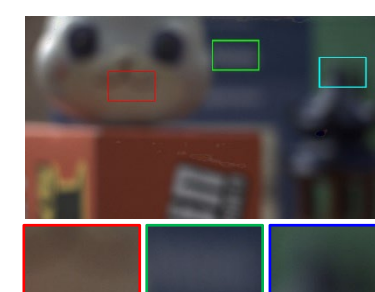
KPAC



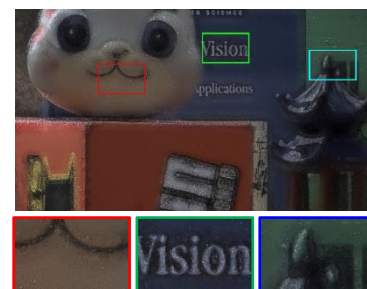
Events



IFAN

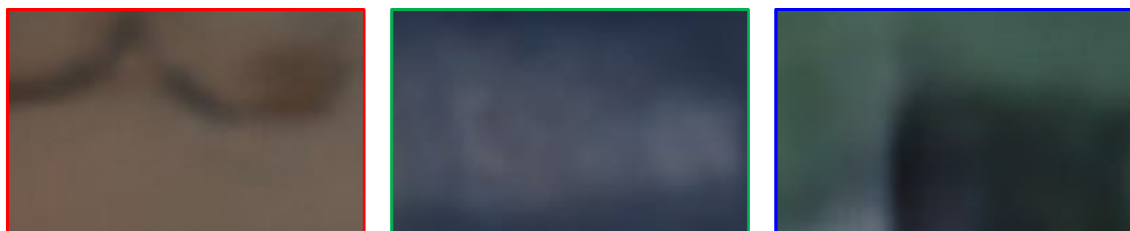
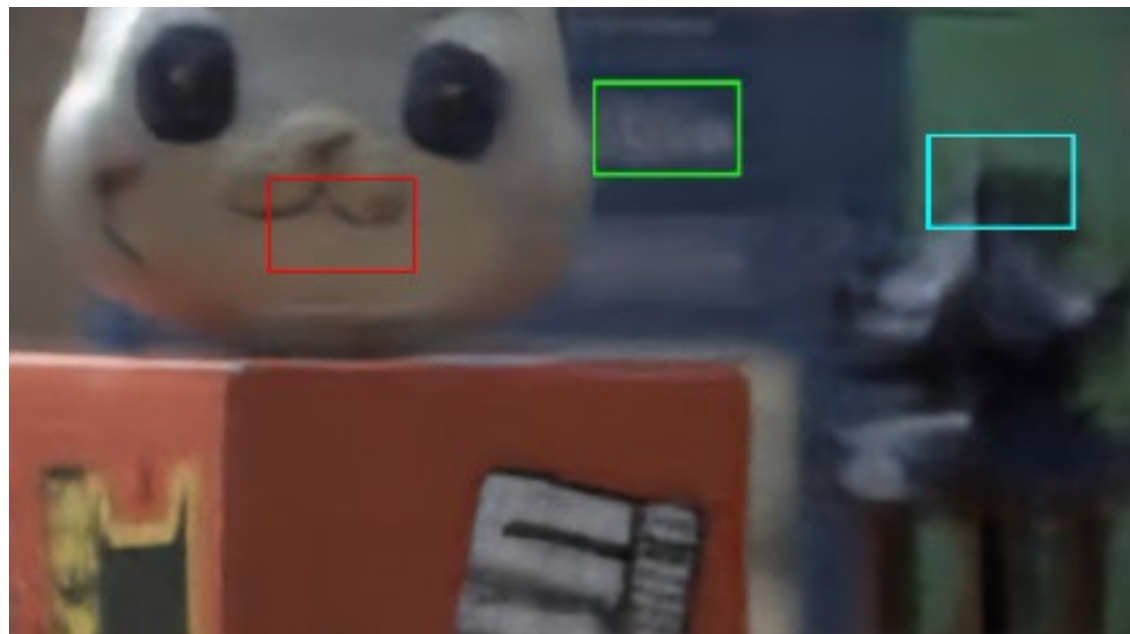


APL

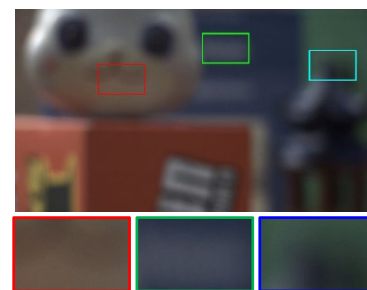


Ours

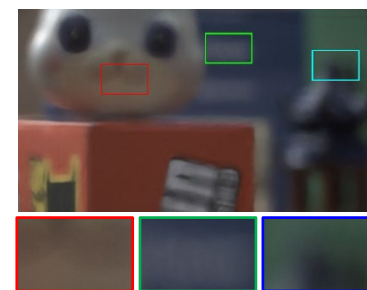
# Results on Real Data



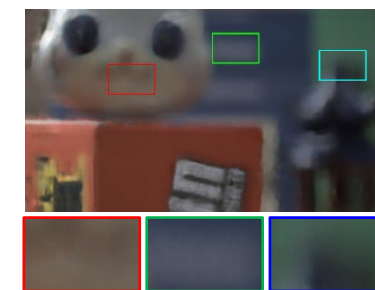
IFAN



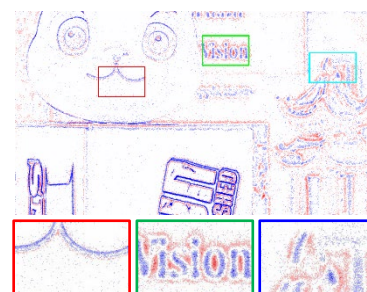
Defocused Image



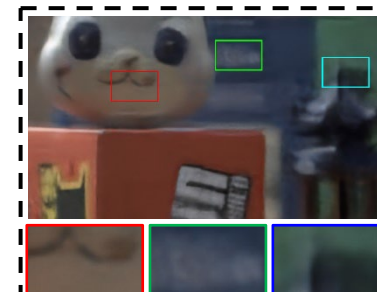
DRBNet



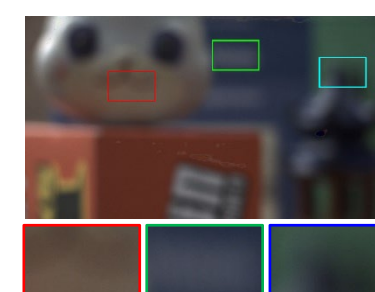
KPAC



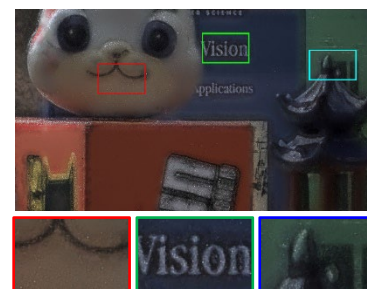
Events



IFAN



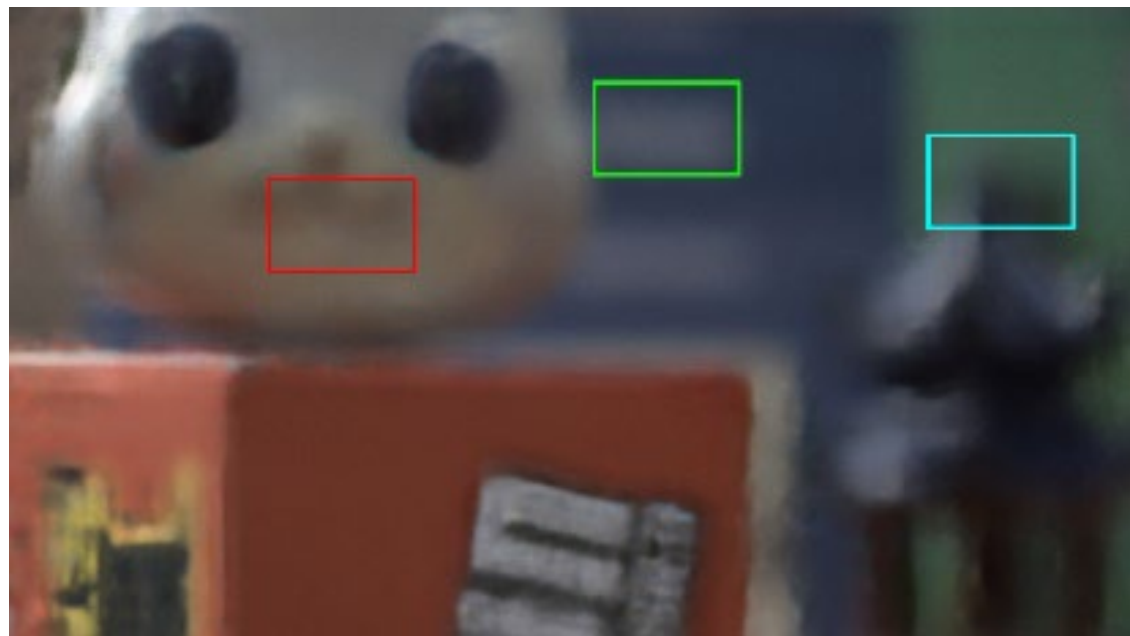
APL



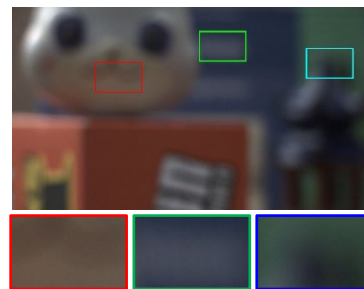
Ours



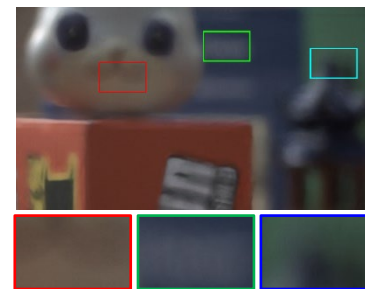
# Results on Real Data



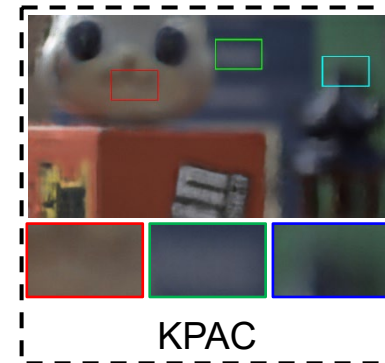
KPAC



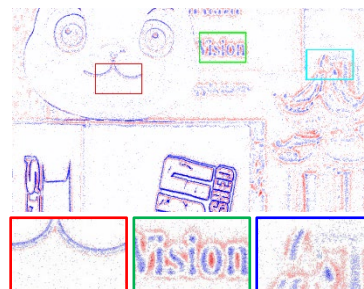
Defocused Image



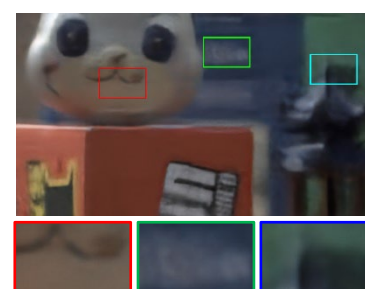
DRBNet



KPAC



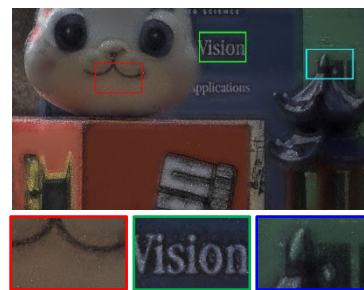
Events



IFAN



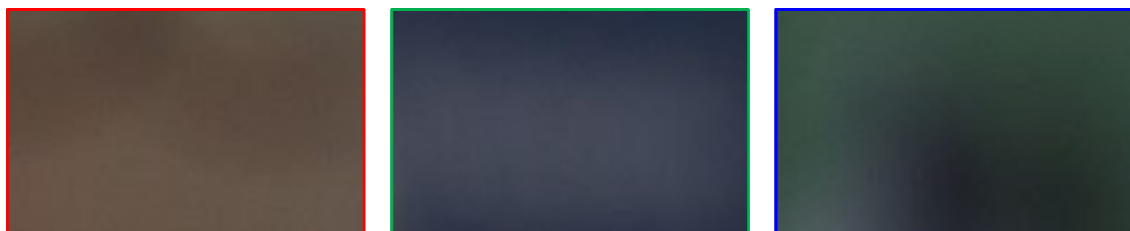
APL



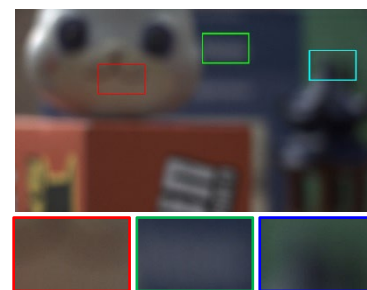
Ours



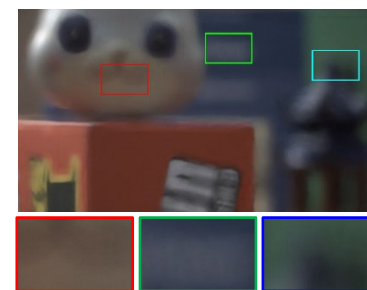
# Results on Real Data



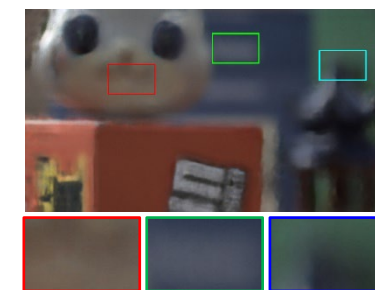
APL



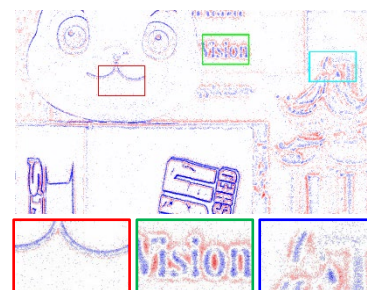
Defocused Image



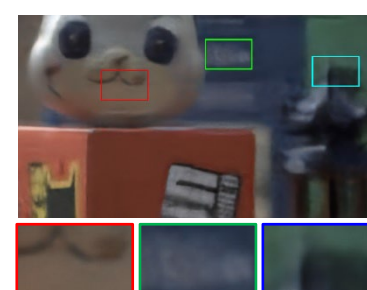
DRBNet



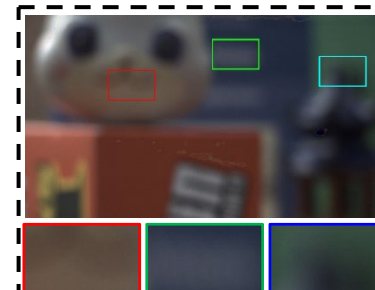
KPAC



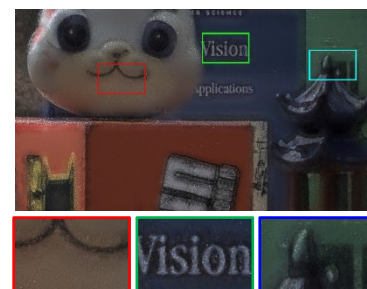
Events



IFAN

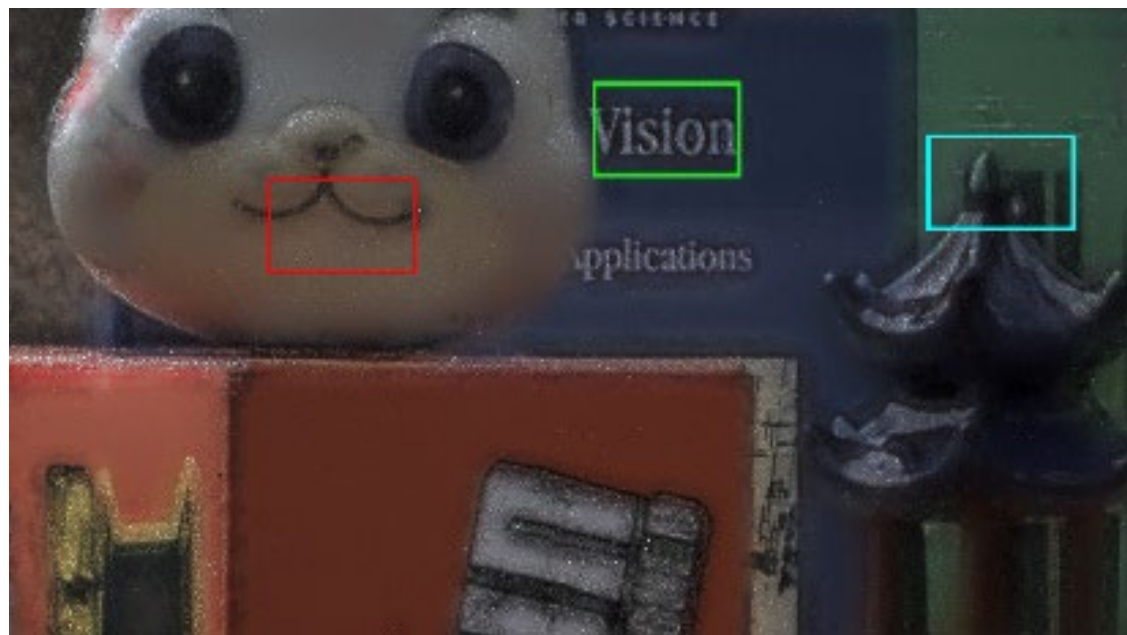


APL

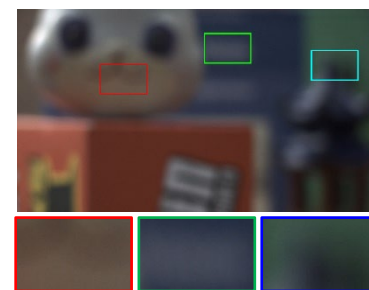


Ours

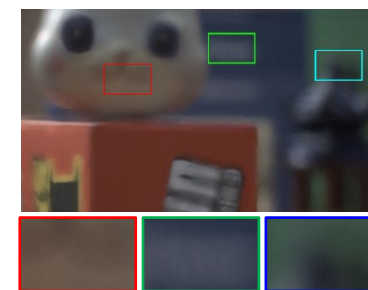
# Results on Real Data



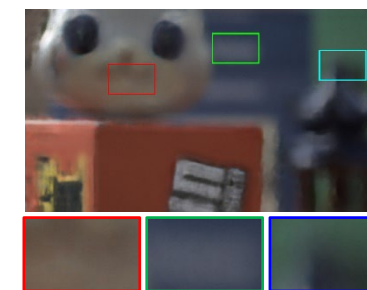
Ours



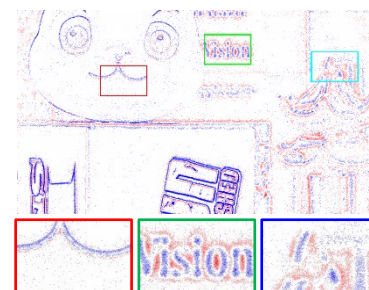
Defocused Image



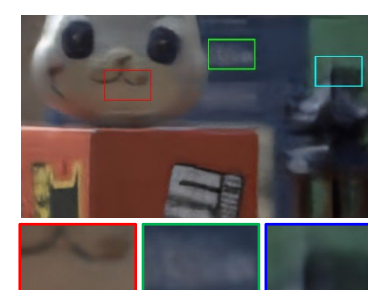
DRBNet



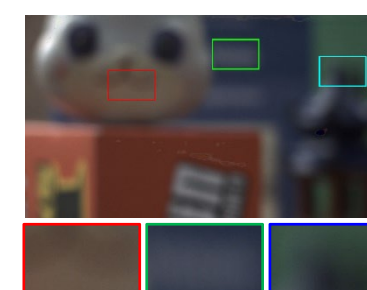
KPAC



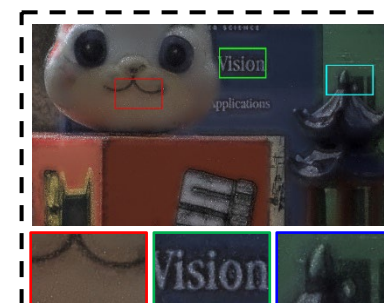
Events



IFAN



APL



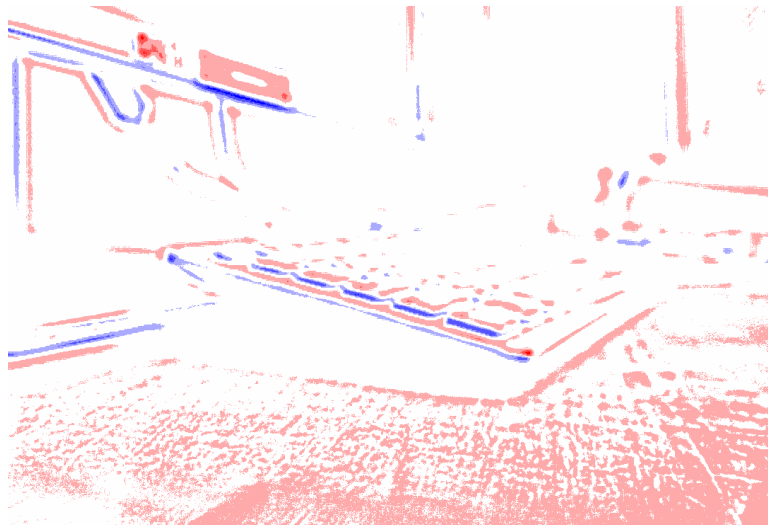
Ours



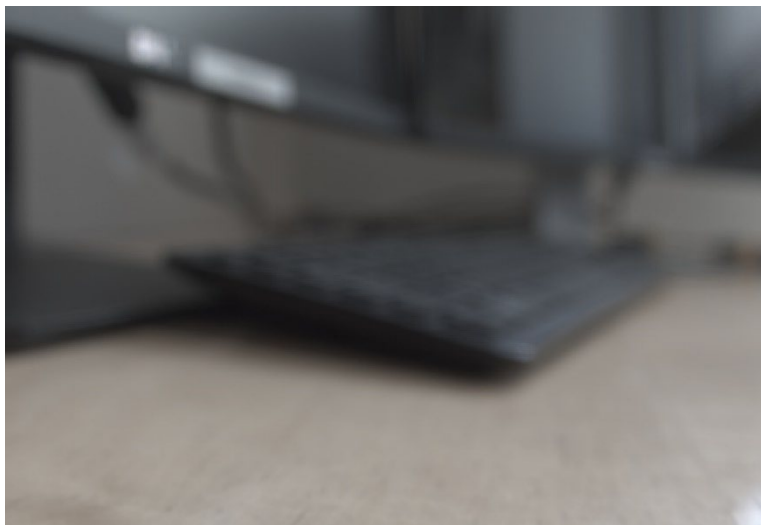
# Refocusing on Synthetic Data



Input Events



Input Image



Refocus Results

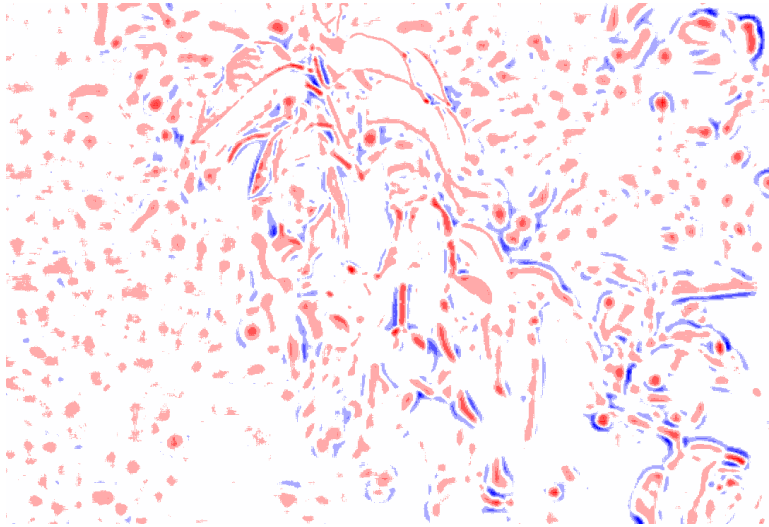




# Refocusing on Synthetic Data



Input Events



Input Image



Refocus Results

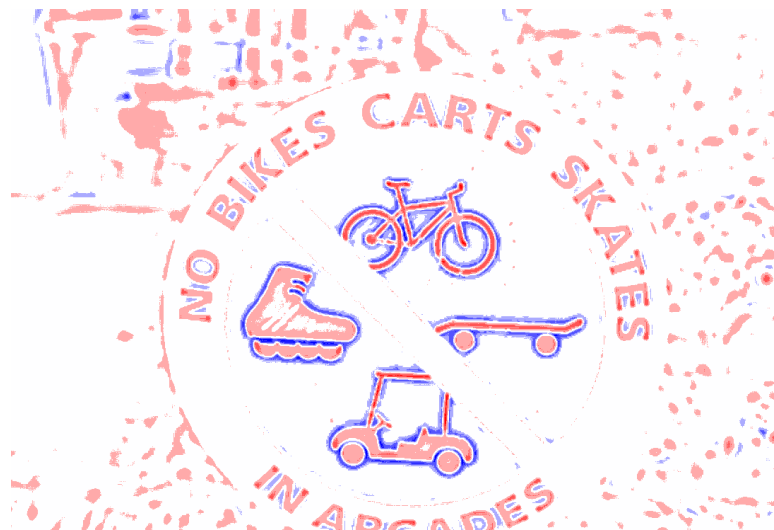




# Refocusing on Synthetic Data



Input Events



Input Image



Refocus Results



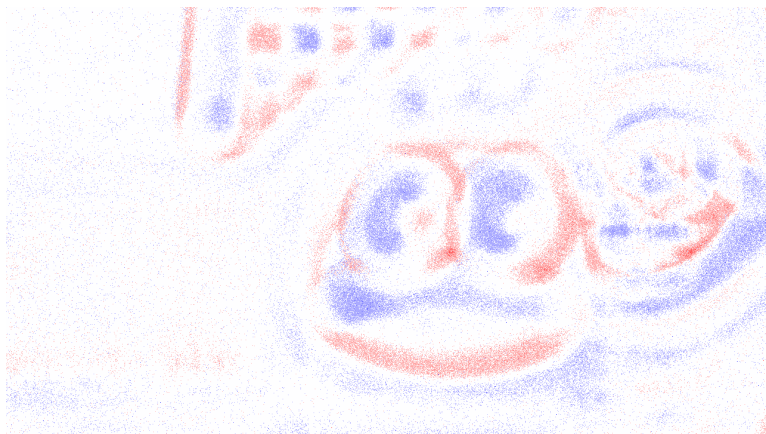




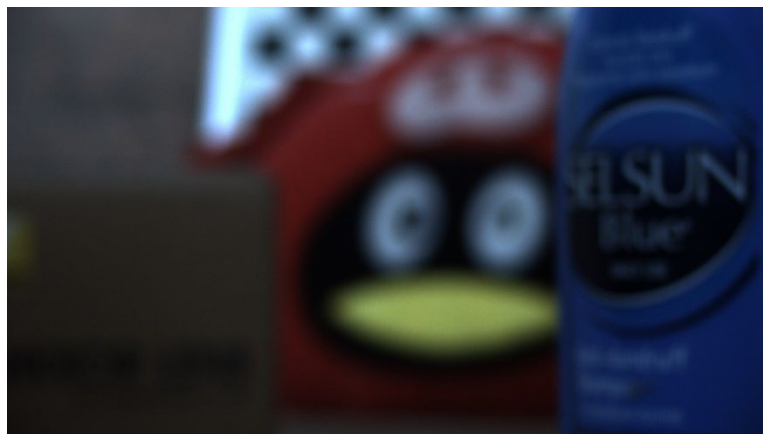
# Refocusing on Real Data



Input Events



Input Image



Refocus Results

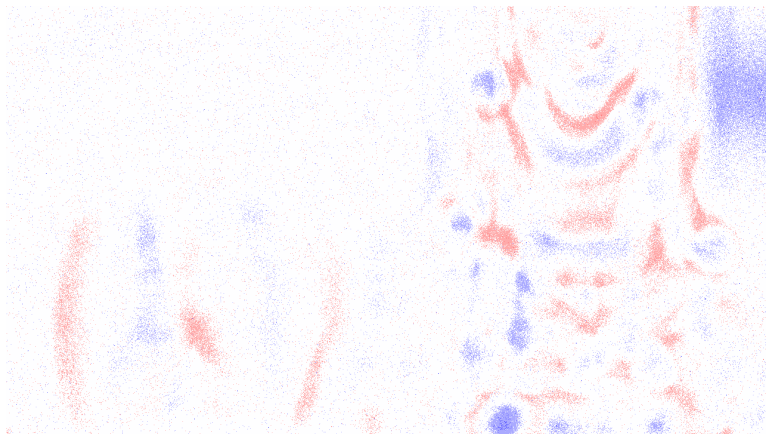




# Refocusing on Real Data



Input Events



Input Image



Refocus Results

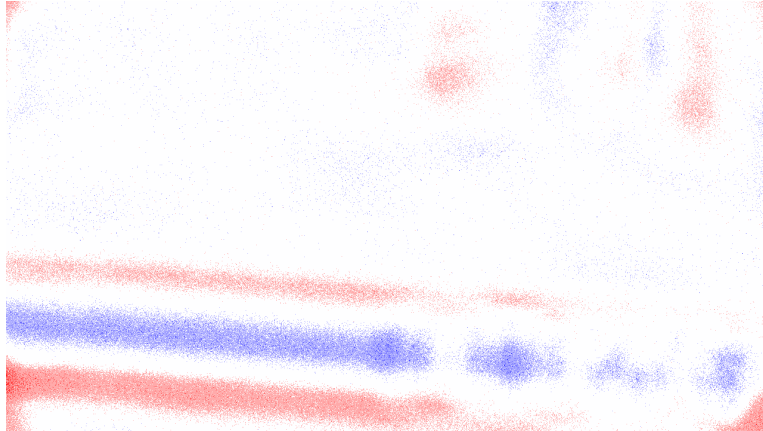




# Refocusing on Real Data



Input Events



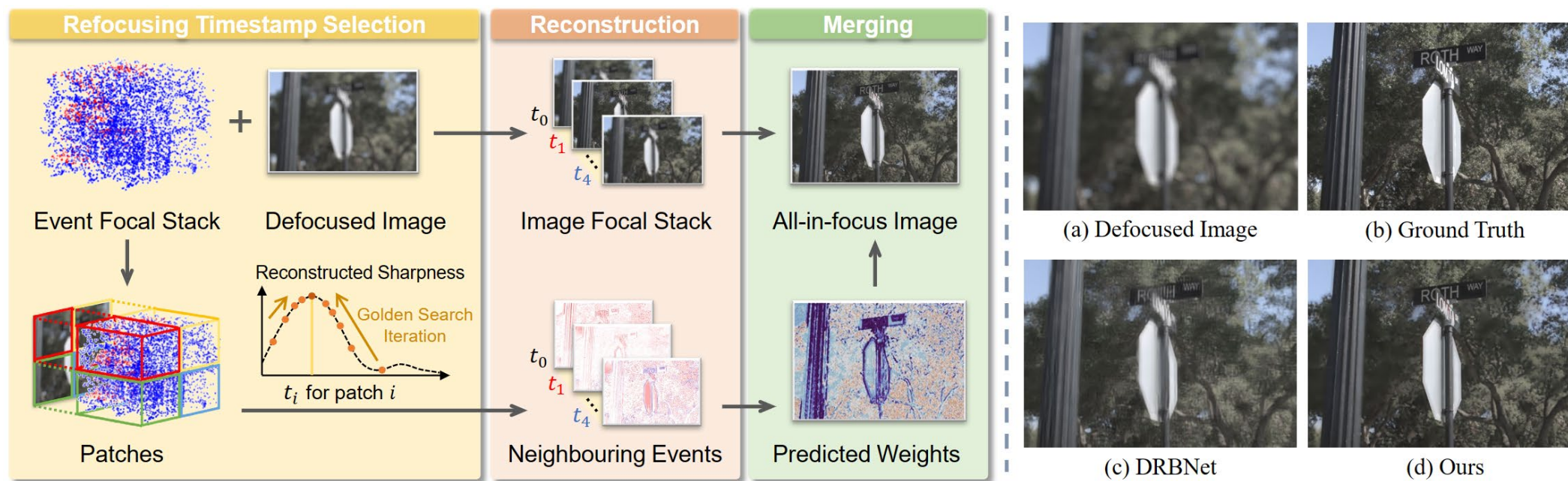
Input Image



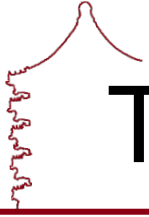
Refocus Results



# Conclusion



- We propose recording Event Focal Stacks (EFS) for high quality all-in-focus imaging.
- We design a three-stage algorithm to exploit the continuous information encoded in event focal stacks.



# Thanks for your time!



**Project Page**



**Lab Page**